



# THE **Birches**

**A NEWSLETTER FOR KINGSTHORN,  
MUCH BIRCH, LITTLE BIRCH & ACONBURY**

*First published 1977 **December 2018***

*The BIRCHES newsletter production team;  
Liz Hall - Editor  
Mike Leigh and John Caton - printers  
John Bryant, Dick Brimacombe and Des Wathen—  
distribution managers  
would like to wish all our readers a Merry Christmas and a  
very Happy New Year*



You are invited to a

## Demonstration of Flower Arrangements For Christmas



by  
**Sandra Snell**  
of **The Flower House**  
**Ross-on-Wye**

**Tuesday 11th December 2018**

**Much Birch Community Hall**  
**Prompt Start 7.30pm**

Tickets **£8.00** to include non-alcoholic punch and  
light refreshments from  
Tel: 01981 540980 or 01981 540097

Proceeds in aid of Much Birch Community Hall

### **Church Services December 2018**

**Sunday 2nd December - Advent Sunday**  
Little Birch 11.00 a.m. - Holy Communion  
St. Weonards 6.30 p.m. - Advent Carol  
Service - including writing cards for Amnesty International

**Sunday 9th December - Second Sunday of Advent**  
Much Birch 9.15 a.m. Family Communion  
Little Birch 11.00 a.m. Morning Worship

**Sunday 16th December - Third Sunday of Advent**  
Much Birch 9.15 a.m. Holy Communion  
Little Birch 11.00 a.m. Holy Communion (traditional language)

**Sunday 23rd December - Fourth Sunday of Advent**  
Little Birch 4.00 p.m. Carols and Christingle  
Much Birch 6.30 p.m. Traditional Lessons and Carols

**Christmas Eve**  
Much Birch 3.30 p.m. Carols and Crib Service  
Much Dewchurch 11.30 p.m. Midnight Mass

**Christmas Day**  
Much Birch 9.15 a.m. Holy Communion  
Little Birch 11.00 a.m. Holy Communion

**Sunday 30th - First Sunday after Christmas**  
Group Communion Service at Llandinabo 10.30 a.m.



## **Diary Dates**

**20th** WI Meeting MBCH  
**23rd** Village Market MBCH  
**24th** MB School Christmas Fayre  
**26th** Flower Demonstration MBCH 7.30pm  
**28th** Gardening Club LBVH

### **December 2018**

**2nd** Parish Walk from LBVH 9am  
**6th** Coffee Morning LBVH 10.30am  
**6th** MB Parish Council MBCH 7.30pm  
**6th** Christmas Bingo LBVH 7.30pm  
**8th** Christmas Cracker LBVH 2pm  
**11th** Whist Drive LBVH 7.30pm  
**14th** Village Market MBCH  
**15th** Book Exchange Methodist Chapel

### **January 2019**

**12th** Wassail LBVH  
**25-26th** LB Panto

### **Book Exchange 15th December**

Christmas time once again and this year we will be celebrating with the usual glass of sherry and a mince pie (or chocolate cake if preferred).

On 8th December Book Exchange will host a table, along with others who regularly use or attend the village hall or chapel for a Christmas tea party—all welcome

After Christmas Book Exchange hope to join Maz at her Artspace afternoon sessions. This will be a new group called "Creative Writing". You do not need a degree in English Language to participate—it's just a bit of fun—but hopefully we may write some things of interest that could go into the Newsletter. Only pen and paper required.

# Little Birch Village Hall Committee

Newsletter notices for December 2018

## Christmas Prize Bingo \*\*PLEASE NOTE CHANGE OF DATE FROM PREVIOUSLY ADVERTISED\*\*

Eyes down at 7:30pm on **Thursday 6<sup>th</sup> December** for our annual Christmas prize bingo. This is always a thoroughly enjoyable evening and has become a firm Christmas tradition. Great prizes and refreshments. We look forward to seeing you.

## Coffee Morning

The next coffee morning will be on **Thursday 6<sup>th</sup> December 10:30am - 12:30pm** at Little Birch Village Hall.

Join us and enjoy a cup of tea or coffee, some cake or a biscuit. Make new friends or catch up with old friends, have a chat and find out more about the local community and let us know your thoughts and suggestions as to how we can develop these regular meetings.

If you need help with transport please contact Margaret: 01981 540374

## Village Christmas Cracker

Join us for a seasonal get together on **Saturday 8<sup>th</sup> December** from **2:00pm to 4:30 pm**

The event starts at the parish field at 2pm with a tree planting to thank John Bryant for his many years of service to our community and then moves to the village hall where we will have games, music a quiz and more.

## Whist Drive

We guarantee a warm welcome and a fun evening with good company at our monthly whist drive whatever your ability. Excellent prizes and refreshments too.

Our next **Whist Drive** is on **Tuesday 11<sup>th</sup> December** at Little Birch Village Hall. We start at **7.30 pm** and the entrance fee is just £2.00.

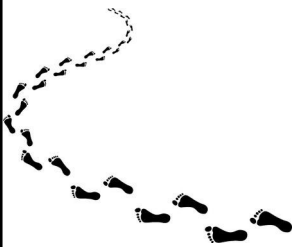
## Community Book Exchange/Lending Library

The next Book Exchange will be on the morning of **Saturday 15<sup>th</sup> December** at the former Methodist Chapel opposite the Village Hall **10am – 12pm**.

All members of the community are invited to join us for this enjoyable monthly event which offers not only a wide range of books and DVDs (to suit all ages and interests) but also an opportunity to meet others and exchange recommendations for a good read.

There is a charge of just £1 per adult towards the cost of the hire and refreshments.

## Parish Walk



**Sunday 2 December at 9am**

Meeting at Little Birch Village Hall and walking around Little Birch and through Athelstan's Woods. Refreshments back at the hall afterwards.

All Welcome!

Angela Middleton

Volunteer Footpath Officer

01981 540377

## A CALL FOR HELP.....

We are looking for volunteers to go on a monthly rota to help us keep Much Birch Churchyard tidy.

We do have someone to mow the grass regularly but we need volunteers to generally tidy up e.g. sweep the path, get rid of weeds and accumulated rubbish in the corners and remove dead flowers from graves. We would be so grateful for this help and you do not have to be members of the congregation. Please contact the Churchwarden, Sylvia Jones tel. 01981 540980 if you can help.

*No Stress, No Worries,*

# Glazy Days

- ◆ **CONSERVATORIES**
- ◆ **WINDOWS**
- ◆ **DOORS**
- ◆ **FASCIAS**
- ◆ **SOFFITS**
- ◆ **GUTTERS**

◆ **ALSO MISTED UNITS RE-**

**01981 541121**  
**07818 611010**  
**www.glazydays.net**  
**Email: sales@glazydays.net**

# JOIN US FOR FESTIVE FUN

**MUCH BIRCH SCHOOL PTF**

# Christmas Fayre

**Saturday 24<sup>th</sup> November**  
**11am – 1pm**

**Stalls, Tea Room, Raffle, Games,  
Cakes, Kids Craft Workshops,  
Santa's Grotto**

## Light up a Life



St Michael's Hospice  
Always a place of light and love

Christmas is often a time when we remember loved ones who are no longer with us and reflect on our memories from the time we spent together.

Light up a Life gives you the chance to remember your loved ones – family, friends and colleagues – by lighting a candle, writing a dedication for inclusion in the Hospice 'Books of Remembrance' and joining us at one of our special events.

For 2018, St Michael's Hospice is arranging 17 events at venues throughout Herefordshire and the surrounding area.

If you would like to Light up a Life this Christmas, please call 01432 851 000 or visit [st-michaels-hospice.org.uk](http://st-michaels-hospice.org.uk)

### Light up a Life Events

\* Thursday 29th November – 5.30pm

St Michael's Hospice, Bartestree (please note this is an outdoor event)

## Aconbury Shepherd Huts



**Our huts are hand built to the highest of standards. Our standard hut includes insulation, double glazing, electrics and decoration.**

**Uses include craft room, play house, sleep over's etc.**

**Come and see our display hut or request our new brochure**

**We also build stables, field shelters, garden sheds, play houses, garden features and bespoke gates. Please ring for our dedicated brochure**

**Stephen Turner. The Underhills, Hollybush Lane, Much Birch, Herefordshire. HR2 8HX.**

**Telephone: Office 01981 540090  
Mobile 07768 206296**

**[www.aconburyshepherdhuts.co.uk](http://www.aconburyshepherdhuts.co.uk)  
[turnersofcrossways@btinternet.com](mailto:turnersofcrossways@btinternet.com)**

# Much Birch

## Parent, Baby and Toddler Group

### Come and Play!

Chat and fun for all

Snacks

Drink lots of Tea or Coffee!

Crafty Activities

Outdoor and indoor toys and play

Make new friends

Friendly and Relaxed

*Much Birch*

*Village Hall*

*Every Friday*

*9.30am – 12.30pm*

*Birth to 4 years*



For more information please contact:  
Karen 07817716137 or [LucyIcook8910@gmail.com](mailto:LucyIcook8910@gmail.com)

## AN INVITATION TO JOIN KILPECK ART CLUB

Our new season began on 17 September 2018 and continues most Mondays until December. We meet on Mondays from 2pm–4pm, in Kilpeck Village Hall. There is no formal tuition but we all encourage each other and have an enjoyable afternoon. To cover the cost of hall hire there is a small membership charge. We are always pleased to see new members, including those who want to try painting for the first time. The first session you come to is free. Contact Jenny Davies e-mail [jen64davies@gmail.com](mailto:jen64davies@gmail.com), or Margaret Bircher at [tandmbircher@btinternet.com](mailto:tandmbircher@btinternet.com). We look forward to seeing you soon

Please send copy for the January Newsletter to [editorial@birchesnews.org.uk](mailto:editorial@birchesnews.org.uk) or written contributions to Liz Hall at Walmere, Wrigglebrook, Kingsthorpe HR2 8AW.

—by 18th December please.



# HEREFORD CHRISTMAS TREES



**Come and meet the new team and  
collect your tree!**

Low Drop and Traditional available, over 5 varieties

Heights from 4ft to 20ft

Open from Saturday 1st December  
to Sunday 23rd December

10 - 6 Mon - Fri : 10 - 4 Sat - Sun

New House Farm Barn  
Grafton Lane  
Herefordshire  
HR2 8BL

**07519 110 239**

[herefordchristmastrees.co.uk](http://herefordchristmastrees.co.uk)



follow and like us on facebook for regular updates

## **Much Birch Community Hall 100 Club**

Results of the 100 club draws which took place in the Community Hall are as follows:

### **14<sup>th</sup> October**

1<sup>st</sup> prize – No 11  
Mr. S. Bloomfield  
Much Birch

2<sup>nd</sup> prize - No. 99  
Mrs. M.Hill  
Kings Thorn

### **11<sup>th</sup> November**

1<sup>st</sup> Prize - No.11  
Mr. S. Bloomfield  
Much Birch

2<sup>nd</sup> prize – NO.29  
Mrs. C. Beevers  
c/o Kivernoll

The next draw will take place on 9<sup>th</sup> December 2018 at 10.30am in Much Birch Community Hall.

John Jones—Promoter

## **EMMA BRADBURY EQUINE**

**Mobile horse clipping services**

**Horse sitting / Holiday Cover**

**Or just an extra pair of hands!**

**25 years experience with horses**

**Fantastic references available**

**01981 541385 : 07725 536648**

**01981 541385 : 07970 346460**

## **TEA ON THE TRAIL**

AT ST MARY'S CHURCH, LITTLE BIRCH

**Refreshments for walkers**

Enjoy a break for a cup of tea or coffee



**Donations** to cover costs and for much needed renovation work at St Mary's Church.

**Thank you**

## **GARTH BRADBURY FENCING LTD**

**All types of fencing**

**Gates**

**Field Shelters**

**Timber Outbuildings**

[www.gb fencing contractors.com](http://www.gb fencing contractors.com)

[garthbradburyfencing@hotmail.com](mailto:garthbradburyfencing@hotmail.com)

**01981 541385 : 07970 346460**

## **BRENDAN MORRIS**

**CONSTRUCTION & CARPENTRY**

**SPECIALISING IN uPVC**

**WINDOWS, DOORS &**

**CONSERVATORIES**

call now for a free quotation

on; **07855760912**

email

[brendanmorris05@gmail.com](mailto:brendanmorris05@gmail.com)

**Local Home Grown Christmas Trees.**

**Norway Spruce and Nordman Fir.**

**Assorted sizes. Freshly cut**



**Follow signs in Little Dewchurch from 1st December.**

**Or phone 01432 840826 to come and select a growing tree for cutting closer to Christmas.**

**Little Birch Drama Group Present**

The next Little Birch Panto !

**“HARLEQUIN AND COLUMBINE”**

At Little Birch Village Hall

Friday 25th January 2019

7.30pm

Saturday 26th January 2019

2.30pm and 7.30pm

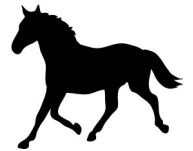
Panto is written and directed by Frank Ryding and stars all our local talented actors of all ages.



Horse/pony/animal help available -

Very helpful, young, teenage, girls are looking to help on a local yard in exchange for a ride (or help with other animals for some pocket money)

07866 006582



**CUSTOMER SUPPLIER SALES RECEIPTS PURCHASES BOOKKEEPING GENERAL JOURNALS RECORDING INCOME SYSTEM TRANSACTION LEDGER DAYBOOK**

**EJ PARTINGTON BOOKKEEPING**

Bookkeeping & Accounting Specialist

Woodfield, Hollybush Lane, Much Birch, HR2 8HX

07989 854593 / 01981 541109

[emmadeer@hotmail.co.uk](mailto:emmadeer@hotmail.co.uk)

Bookkeeping	VAT Returns
Invoicing	Management Accounts
Payroll	Self-Assessment Returns

Emma Partington has over 10 years experience in the finance industry both in practice and in industry, a local business that is able to help with all your bookkeeping needs.

**Call or e-mail today for a no obligation discussion about your requirements.**

**Exercise Bike**

Tunturi home exercise bike for sale

Offers?

Rings Graham 01981 540614



**Ross Library Development Group:** All interested are invited to attend our Christmas Talk in the Library on Tuesday evening 11th December 7.00 for 7.30 with poet **Sara-Jane Arbury** and festive refreshments. Entry £4 for RLDG Members and £5 for non- Members, Students free. For more details see the website [www.rldg.org.uk](http://www.rldg.org.uk) There will be no Talk in January.

**Ross Civic Society** Members and friends are invited to join us for a Christmas Lunch at the Royal Hotel, Ross, on Wednesday 12th December, 12.30 for 1.00 p.m. The cost will be £18.99 for 2 courses and £21.99 for 3 courses. If you would like to come please contact Beverly on 01600 890678. There will an extra, free Talk on Wednesday 23rd January 2019 at St. Mary's Church, Ross 7.15 p.m. on the 'History, Art and Architecture of St. Michael's Church, Brampton Abbots and other Churches around Ross'.

**Ross Arts Appreciation Society:** Join us for a Celebratory Christmas Lunch at Bridstow Village Hall, on Saturday 8th December 1.00 for 1.30 p.m. This will be followed by a presentation by Poet, Sara-Jane Arbury. Cost £12.50 each. For details ring Jan Falkiner on 01989 720539.

**Ross Science Society:** On Wednesday, 5th December at the Castle Lodge Hotel, Wilton (just off the roundabout) 7.00 for 7.30 p.m. enjoy an illustrated Talk on **Antarctica** with speaker David Fletcher followed by mulled wine and mince pies. The January Talk will be held on the second Wednesday evening, 9th January, 7.00 for 7.30 on **ELECTRIC VEHICLES** with Speaker Professor Averil Macdonald. Entry £4. for visitors, £16 for a year subscription. Students free. See the website [www.rosssciencesociety.org.uk](http://www.rosssciencesociety.org.uk) All welcome.



## THE AXE & CLEAVER

Much Birch, Hereford, Herefordshire. HR2 8HU  
Tel No: 01981 540203  
Proprietors Andy & Sue Hoare

### WEEKLY SPECIALS

MONDAY –FRIDAY LUNCHTIME SPECIAL  
TWO COURSES  
£9.95

~~~~~  
WEDNESDAY  
SENIOR CITIZENS' LUNCH  
TWO COURSES  
£6.95

~~~~~  
SUNDAY LUNCH  
TWO COURSES  
CHOICE OF THREE ROASTS  
+  
CHOICE OF DESSERTS  
£12.95

BOOKING ADVISABLE

## Village Christmas Cracker

Seasonal 'Get together' on Saturday 8<sup>th</sup> December  
2:00pm to 4:30 pm  
At Little Birch Village Hall

Come and join us for a couple of hours at this FREE community event.

The event will begin at 2pm when you are invited to join us out on Parish Field.

The Village Hall Committee would like to show the appreciation of the community for all that John Bryant has done over the years. We felt that this should be something lasting, so an apple tree, chosen by John, will be planted with a little help from him on Parish Field.

Following the tree planting, please join us in the Village Hall to continue our 'get together' where some of the groups that organise events in the hall will be on hand to showcase their activities.

There will also be music, films/slides a quiz and games for children.

Meet up with friends and neighbours new and old and find out more about what goes on in *your* Village Hall.

Refreshments will be available.

### LocalCarer

Over15 years of experience

For all aspects of care within the comforts of your own home



Call Kim for advice

07944 745853



FB: Murphy's Paw  
Doggie Services

### Murphy's Paw

The home of happy woofers!

Doggie Daycare  
One to One Grooming  
Home Boarding

Tump Lane, Much Birch  
Tel: Tricia 07732 286069

[murphypaw2005@gmail.com](mailto:murphypaw2005@gmail.com)

[www.murphypaw.co.uk](http://www.murphypaw.co.uk)

Providing a true "home from home" environment.

We welcome friends, old and new!

**Jargon-free  
Computer Help**



**Computer Tuition,  
Technical Support and  
Buying Advice.**

Local, friendly help with  
no jargon and  
reasonable rates

---

**Ben Roberts**  
**07702 760789**  
[ben.roberts@outlook.com](mailto:ben.roberts@outlook.com)



[www.greenleafarchitecture.co.uk](http://www.greenleafarchitecture.co.uk)  
E. [info@greenleafarchitecture.co.uk](mailto:info@greenleafarchitecture.co.uk)  
Tel. 01981 257180 M. 07946457251

Friendly and reliable, chartered Architectural Practice based in  
Wormelow.

All Architectural work undertaken. General advice; Planning  
applications; Detailed design for Building control and Tender;  
Project management



**BAYLEY'S  
WINDOW CLEANING  
SERVICE**

WATER FED POLE AND TRADITIONAL

WE ALSO CLEAN:-

- ⇒ GUTTERS AND FACIAS
- ⇒ CONSERVATORY ROOFS

***FREE QUOTATIONS***

\* REFERENCES CAN BE GIVEN \*

\* ESTABLISHED IN AREA \*

PHONE ANDREW

HOME: 01432 508979

MOBILE: 07771 870891

E-Mail: [bayleyscleaning@gmail.com](mailto:bayleyscleaning@gmail.com)

**Self-storage  
Herefordshire**

£15 per week—no VAT  
20ft x 8ft

7 Days a week access  
Long or short term rental.

***Seasoned  
Firewood for Sale***

**George Cole**  
**Mob: 07800952317**  
**Tel: 01981241274**

**Much Birch WI**

Much Birch WI meets on the third Tuesday of each  
month in Much Birch Community Hall, just off the  
A49. The Hall is next door to the surgery and both  
are signed from the road.

Please contact Sallie on 01432  
340069  
for further details.



# Great Local Food & Drink in Much Birch

All Day Every Day



PILGRIM  
HOTEL

Menus on website [www.pilgrimhotel.co.uk](http://www.pilgrimhotel.co.uk)



VALLEY  
RESTAURANT

Country House Hotel for both Hereford & Ross on Wye in the stunning Wye Valley. Both are within easy reach of the charming & friendly **Pilgrim Country Hotel**. Choose a Valley View room and enjoy **fabulous sunsets** & far reaching views to the Black Mountains and Pen-y-Fan, the highest point in the Brecon Beacons National Park. Fabulous **fresh Hereford produce** is used throughout our menus.

Whatever your reason for visiting the Wye Valley, whether it be a **Murder Mystery Dinner**, walking holiday, business trip, or just to relax, you will be assured of a warm, friendly and relaxing welcome.

*Steve & your Team*

**Booking is recommended - 01981 540742**

*The Pilgrim Hotel*

*Much Birch HR2 8HU*

*Email [stay@pilgrimhotel.co.uk](mailto:stay@pilgrimhotel.co.uk)*

## POLISHED NAIL & BEAUTY LOUNGE

*"Where friends and beauty meet...."*

A GIRL SHOULD BE TWO THINGS

*Classy & Fabulous*

\*Coco Chanel



OPI MANICURES \* PEDICURES \* GEL POLISH \* SCULPTURED ACRYLIC/  
GEL NAIL EXTENSIONS \* BEACH/HOLLYWOOD TOES \* SIGNATURE  
EYEBROWS—SCULPT, COLOUR AND CORRECT \* THREADING \*  
\*WAXING \* SEMI PERMANENT EYELASHES

REGULAR AESTHETIC CLINICS WITH Dr Sarah Parkes

GENTLEMANS LOUNGE HELD EVERY TUESDAY AFTERNOON FROM 2-5PM

'The Wood Shed'

Pengethley Garden Centre, Peterstow, Ross on Wye, HR9 6LL

Email [Polished.jacqueline@gmail.com](mailto:Polished.jacqueline@gmail.com)



Polished-Nail And Beauty

01989 730791 or 0775913783

OPEN: TUESDAY-SATURDAY 9am-5pm. Complimentary Tea and Coffee



# Household recycling and rubbish collections

## Normal collection day

Tuesday 25 Dec
Wednesday 26 Dec
Tuesday 1 Jan 2019

## Revised collection day

Saturday 22 Dec
Saturday 29 Dec
Saturday 5 Jan 2019

No collections on Christmas Day, Boxing Day and New Year's Day

Please put your bin out by 6.30 a.m. on your collection day, or the night before, throughout the festive period.

### Household Recycling Centres

Will be closed on Christmas Day, Boxing Day and New Year's Day but open as usual on all other days.

Details of opening times can be found on our website.

Depositing of business waste is prohibited at all sites.

### Business Customers

We will notify you of changes to your collections



## About Us

Carrot&Wine Stores is brand new to the Hereford area.

Our family run company aims to offer all the convenience and family friendly service of a local store with the added benefit of locally sourced produce.

We stock local groceries, meats and cheese to local award winning cider, wine and all the daily essentials such as bread, milk, eggs and newspapers.

Open 7 days from 7am to 9pm  
Find us at Wormelow on the A466!

(Postcode for Sat Nav: HR2 8EJ)

# CARROT & WINE STORES

# WORMELOW

## COMPOST HEAP

Invite you to their annual

# Wassail

At Little Birch Hall

**SATURDAY  
JANUARY 12<sup>TH</sup>**

7.00 for 7.30 p.m.

In aid of

**The Haven**

A local charity offering support for those affected by breast cancer

It's the same old twaddle! Come and dress up warm, with noise-making equipment, to process to the orchard and make a traditional Wassail around the apple trees, followed by the traditional MUMMERS PLAY and entertainment in the Village Hall.

There will be FOOD available  
Tickets (£7.50 & £4 u12) from:  
Bob and Sue Chance 01981 540725  
Bob Mason 07771574490  
There will be a BAR



18 year old babysitter available weekdays/ weekends. £6 an hour. Ring 07909 940916 for more details.

Cecily Daffern

## Meeting of the Hereford Civic Society Thursday 13th December

7.30pm Kindle Centre besides Hereford ASDA, HR2 7JE

Hereford's shops, despair or optimism. Talk/ discussion on improvements achieved in Hereford City since the BID was established in 2015.

Speaker: Mike Truelove, Operations Manager Hereford Business Improvement District.

Membership £15pa., visitor £3 donation

arts  
alive

FLICKS  
IN THE  
STICKS

at Much Birch  
Community Hall

Tuesday 4th December, 7.30 pm

**MAMMA MIA!**  
— HERE WE GO AGAIN —

**MAMA MIA! HERE WE GO AGAIN** PG

*Get ready to sing and dance, laugh and love all over again!*

*'Mamma Mia! Here We Go Again' picks up the story with Sophie pregnant, and not sure how she's going to cope. But her mother's story might give her some pointers...*

*Moving between past and present, we follow Sophie as she tries to come to terms with her situation, and also see how Donna did it all those years ago, falling in love and building a home for her family on their sun-soaked island.*

*Starring Amanda Seyfried, Lily James and Meryl Streep.*

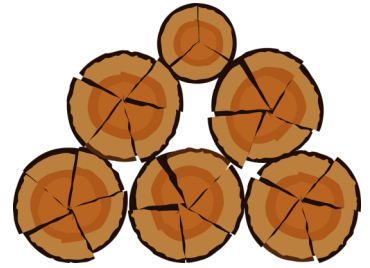
**Refreshments including hot dogs available from 7pm**

**Tickets £4.50 (£3.50 under 16s)**

Tickets available in advance or on the door - for further info or to book tickets [muchbirchflicks@hotmail.com](mailto:muchbirchflicks@hotmail.com) or 01981 540097

For further information about films and screenings visit [www.artsalive.co.uk](http://www.artsalive.co.uk) (online booking available!)

**The log sales are back!**



Worcestershire Wildlife Trust's log sales start for the autumn/winter on 29th & 30th September at **Tiddesley Wood**, near Pershore. The sales take place from the barn, which is about 300m from the main car park entrance.

Did you know that all of the wood sold at Tiddesley Wood is from our nature reserves and that the removal of some trees creates open habitat for a variety of wildlife? Not only that, all profits from the sales come back to the Trust to help fund future work - it's a win-win situation.

You can come along either day from 10am through to 1.00pm and pick up bags at £5.50 each or get loose logs packed into your boot or trailer - a price will be worked out for you at the time based on £110 per cubic metre.

[www.bgbuk.com](http://www.bgbuk.com)

[info@bgbuk.com](mailto:info@bgbuk.com)

Your one-stop design and planning solution

With over 10 years Industry experience

- Planning Drawings & Applications
- Architectural Drawing & Design
- Homes, extensions & listed buildings
- Repair & Conservation of Historic Buildings
- Historic & Timber Building Survey & Consultancy

**We specialise in Planning drawings/applications**

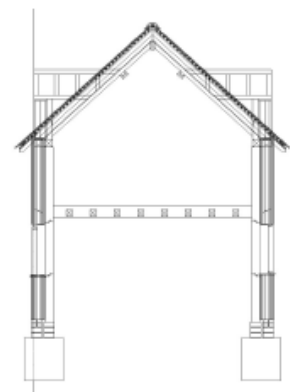
**& 3D architectural design.**



Design & Consultancy

[www.bgbuk.com](http://www.bgbuk.com) [info@bgbuk.com](mailto:info@bgbuk.com)

**Tel: 01432 607 407**



# THE CASTLE INN @ LITTLEBIRCH

## NEW OPENING TIMES

Monday—fish and chip night 5pm - 11pm

Tuesday—pizza night 5pm - 11pm

Wednesday—steak night 5pm - 11pm

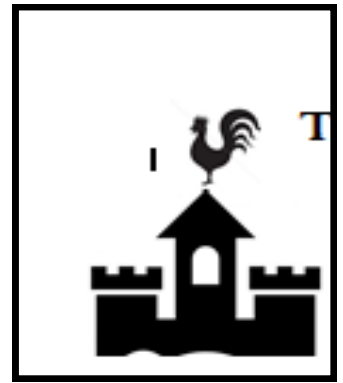
Thursday—pie night 5-11pm

Friday 5-11pm

Saturday all day

Sunday lunch 12-4pm

*Evening menu is also available on the different food nights*



Seb and Emma welcome you to the Castle Inn for home cooked food, real ale and friendly atmosphere!

**New pub number; 01981540943**

***Call for any information and bookings!***

# healthyfeet

mobile clinic

## Mobile Foot Clinic

Experienced, Fully Qualified and Registered  
Foot Health Practitioners, First Aid Trained  
and DBS Police Checked

- Nail Trimming
- Thickened Nails
- Corns
- Callus (hard skin)
- Cracked Heels
- Verrucas
- Fungal Nails & Infections
- Ingrown Toenails
- Diabetic Foot Care



Checked ✓  
Disclosure &  
Barring Service



**Sophie Limming Dip FH MCFHP MAFHP**  
Qualified & Registered Foot Health Practitioner

**Tel: 0749 309 2960**

sophie@healthyfeetclinic.co.uk www.healthyfeetclinic.co.uk



## HOLLYBUSH HIRE

*Vintage Tea Set Hire*

*Woodfield, Hollybush Lane, Much Birch, HR2 8HX*

*07989 854593 / 01981 541109*

*[emmadeer@hotmail.co.uk](mailto:emmadeer@hotmail.co.uk)*

*Tea Cups, Saucers & Tea Plates*

*Sandwich / Cake Plates*

*Teapots, Sugar Bowls & Milk Jugs*

*Cake Stands*

*Lanterns, Mirrors*

Improve flexibility, build strength and develop control and endurance

# PILATES

with Alison Allan

Little Dewchurch Village Hall  
(3 miles from the A49,  
between Hereford and Ross)

Mondays (am) and Wednesdays (pm)

Telephone: 01432 840491

Email: [alionpilates2016@gmail.com](mailto:alionpilates2016@gmail.com)



STOTT PILATES<sup>™</sup>  
merrithew CORPORATION

## décor solutions

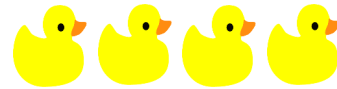
Tim Jones  
Painter and Decorator



Kings Thom, Herefordshire, HR2 8AW  
Tel: 01981 540242 Mob: 07810 895355  
[tjsj@me.com](mailto:tjsj@me.com)

Three generations of experience specialising in Painting and Decorating services.  
General property maintenance duties carried out.  
Fully insured. Good competitive rates.  
A high standard of workmanship and customer satisfaction guaranteed.

## WYE BATHROOMS



Local family run company. Design & installation of  
Bathrooms & shower rooms

We are also registered with NIC-EIC for all your Electrical  
work

Call Paul for a free quotation

Or visit

[www.wyebathrooms.co.uk](http://www.wyebathrooms.co.uk)

07894-563897



## W.M. PARTINGTON

### GENERAL BUILDER

- MINI-DIGGER & EXCAVATOR HIRE

RENOVATIONS  
BARN  
CONVERSIONS  
NEW BUILD  
EXTENSIONS

ROOFING  
CONCRETING  
PLASTERING  
GROUNDWORK

UPVC WINDOWS  
AND DOORS  
BRICKWORK  
STONEMWORK

RING FOR A QUOTATION

MUCH BIRCH  
07774 805369 / 01981 541109

# AQUASSIST

## LIQUID WASTE SOLUTIONS

### Septic Tanks & Treatment Plants

- emptying
- jetting
- blocked drains
- servicing
- installations
- emergencies

Locally based company  
01432 353 888  
[book@aquassist.co.uk](mailto:book@aquassist.co.uk)  
[www.aquassist.co.uk](http://www.aquassist.co.uk)



## Little Birch Parish Council

Your Little Birch Parish Council Councillors are:-

Cllr Ben Roberts	Chairman	01981 540100	b3nroberts@gmail.com
Cllr Steve Naylor		01981 541323	steve.naylor5@btinternet.com
Cllr Mike Morley		01981 541027	morley04@globalnet.co.uk
Cllr Annette Wissler		Contact through the clerk	
Cllr Janet Gwinnett		01981 540651	janetgwinnett@hotmail.com
Angela Middleton	Volunteer Foot Paths Officer	01981 540377	ajbmiddleton@hotmail.co.uk
Sophie Glover	PC Clerk	01432 270499	littlebirchpcclerk@hotmail.co.uk

Parish Council meetings usually happen at 7.30pm on the first Wednesday of the month and all parishoners are very welcome to attend. Agendas are posted on the Parish notice board at least three days in advance and are also on our web site.

Thank you.

Mrs Sophie Glover, Little Birch Parish Clerk, The Orchard, Ridgehill, Hereford HR2 8AG

Website: [www.littlebirchparishcouncil.org](http://www.littlebirchparishcouncil.org)

### Little Birch Parish Facebook Group



Find the latest news, events and business listings all in one place.

You are welcome to promote your local business, advertise a local event or post news or information of interest to the village and surrounding area.

Search for *Little Birch Parish Group* on Facebook

### Yoga



In Much Dewchurch and Steiner Academy  
Mondays 6.00—7.15

- ⇒ Tension and stiffness?
- ⇒ Back ache, backache, general aches and pains?
- ⇒ Difficulty sleeping?

Learn how to relax and let go. Discover how you can move more freely and improve your posture. A practical approach to yoga that is adaptable to anyone regardless of age or physical condition. All welcome

- ◆ Small group Classes
- ◆ Individual attention
- ◆ Connect with your breath
- ◆ Link simple movements for health and well-being
- ◆ Suitable for those recovering from injuries

Individual lessons also available

For more info contact Mike 01981 250341

### Need some Domestic Help?

Experienced Nanny/carer/cleaner/pet sitter available for £10 per hour.

Call Karen 01981 540710 or 07866 626531  
Own transport

Please send copy for the January Newsletter to [editorial@birchesnews.org.uk](mailto:editorial@birchesnews.org.uk) or written contributions to Liz Hall at Walmere, Wrigglebrook, Kingsthorpe HR2 8AW.

—by 18th December please.

### R&R FIREWOOD

*Well seasoned hardwood  
Cut to any size  
Delivered to your door*

**STEPHEN or TARA**  
**Tel: 01432 870282**



17th November 2018

**PARISH MEETING** - at the Parish Council Meeting held on the 8<sup>th</sup> November 2018 at the Much Birch Community Hall. The Parish Council discussed a local planning application and made their comments. The issue of keeping the local roads as safe as possible during icy conditions was discussed. The Parish Council resolved to purchase a number of new grit bins for around the parish lanes, which will be filled with grit/salt, to help with traction during icy spells. Please note that the grit, in all of the roadside bins, is provided for use on the **roads only** and is not for use on private driveways.

The dates for the 2019 Meetings are as follows: January 3, February 7, March 7, April 4, May 9, June 6, July 4, September 5, October 3, November 7 and December 5.

The next meeting of the Parish Council will be held on **Thursday 6<sup>th</sup> December 2018 from 7.30pm** - at The Much Birch Community Hall.

Please see notice boards and website for agendas. As always the public and press are more than welcome to attend and will have the opportunity to speak directly to their representatives.

A reminder that:-

**Your Much Birch Parish Councillors are:-**

Cllr Alison Cook (Chair) Jasmine Cottage, Wrigglebrook Lane, Kingsthorpe, Hereford, HR2 8AW, e mail [thecooks@wyenet.co.uk](mailto:thecooks@wyenet.co.uk) Tel. 01981 540703  
Cllr Steve Turner (Vice Chair) The Underhills, Hollybush Lane, Much Birch, Hereford, HR2 8HX, e mail [turnersofcrossways@btinternet.com](mailto:turnersofcrossways@btinternet.com) and Tel. 01981 540090  
Cllr Andrew Crum Anfield House, Barrack Hill, Kingsthorpe, Hereford, HR2 8AX, e mail [a.crum@btinternet.com](mailto:a.crum@btinternet.com)  
Tel. 01981 540002  
Cllr Roisin Burge The Old Hall, Barrack Hill, Little Birch, Herefordshire, HR2 8AX [roisinburge@hotmail.com](mailto:roisinburge@hotmail.com) Tel. 01981 540724  
Cllr David Baldwin The Granary, Much Birch, Herefordshire, HR2 8HS [baldwin79@btinternet.com](mailto:baldwin79@btinternet.com) Tel. 01981 541198  
Cllr Rosemary Rigby MBE Cartref, Tump Lane, Wormelow, Herefordshire, HR2 8HN Tel. 01981 540477

Full minutes of the meetings and information etc. can be found on the Parish Council website following the link found in this summary [www.muchbirchparish.org.uk](http://www.muchbirchparish.org.uk).

You can also find us on Twitter at <https://twitter.com/MuchBirchPC> and Facebook at <https://www.facebook.com/groups/Much.Birch.Parish>

---

**South Hereford Rural Safer Neighbourhood Team (SNT)**

**Lowri Anderson PCSO 40247**

**Hereford City Southside and Rural SNT**

**West Mercia Police**

**Get in touch**

**101** to talk to your local SNT or report a crime  
[herefordsouthside.snt@westmercia.pnn.police.uk](mailto:herefordsouthside.snt@westmercia.pnn.police.uk)  
[www.westmercia.police.uk](http://www.westmercia.police.uk)

**Herefordshire Cops / @southsidecops**

Only call 999 in an emergency, when a crime is in progress or life is in danger.

**For daily updates on incidents in your area register for our Dotmailer service via [www.westmercia.police.uk](http://www.westmercia.police.uk).**

**Make the difference**

For more information about becoming a Special Constable, please visit,

**Warwickshire Police:** [www.warwickshire.police.uk/specialconstables](http://www.warwickshire.police.uk/specialconstables)

**West Mercia Police:** [www.westmercia.police.uk/specialconstables](http://www.westmercia.police.uk/specialconstables)



**PLEASE NOTE AND PASS TO ALL YOUR CONTACTS**

Christmas is fast approaching, Royal Mail & The Trading Standards Office are making people aware of the following scam:

A card is posted through your door from a company called PDS (Parcel Delivery Service) suggesting that they were unable to deliver a parcel and that you need to contact them on 0906 6611911 (a Premium rate number).

If you call the number and you start to hear a recorded message you will already have been billed £315 for the phone call.

If you do receive a card with these details, then please contact Royal Mail Fraud on 020 7239 6655.

For more information, see the Crime Stoppers website: <http://www.crimestoppers-uk.org/crime-prevention/helping-prevent-crime/scams/postal-delivery-scam>

Please be aware that the premium rate number may change but nevertheless please do not call any number stated on a card from PDS.

**Can you please make all your family, friends and neighbours aware of the above.**