



# ***THE Birches***

**A NEWSLETTER FOR KINGSTHORN,  
MUCH BIRCH, LITTLE BIRCH & ACONBURY**

*First published 1977* **November 2018**

MUCH BIRCH COMMUNITY HALL PRESENTS  
**'KEEP CALM & CARRY ON'**  
WITH  
**KEITH NICHOLS**  
**Saturday 10th November - 7.30pm**

Keith Nichols, one of the foremost and respected authorities on Classic Jazz & Ragtime music is returning to Much Birch as we remember **Britain at war**. He will be entertaining us with his unique rendition of music made popular in the eras of World War I & World War II. Keith, a remarkable jazz pianist performs at all the major jazz festivals & lectures at The Royal Academy, he also enjoys playing the piano to accompany silent films and will explain how different accompaniments were provided for silent movies as well as performing songs and piano solos from the wartime eras.

**An evening not to be missed!**  
Doors open 7.00pm  
Entrance £10.00 to include a 'Wartime' bread and cheese supper  
Licensed Bar

Tickets available on the night or, to book in advance  
phone Carole 01981 540095 or Bryony 01981 540097  
Proceeds to Much Birch Hall Community Hall Development Fund

## **Church Services November 2018**

### **Sunday 4th - All Saints and All Souls**

11.00 a.m. Little Birch Holy Communion

6.30 p.m. Much Birch All Souls service, remembering those who have died.

### **Sunday 11th - Remembrance Sunday**

9.15 a.m. Much Birch Holy Communion with Remembrance

10.50 a.m. Little Birch Morning Worship with Remembrance

### **Sunday 18th - 2nd Sunday before Advent**

9.15 a.m. Much Birch CW Communion

11.00 a.m. Little Birch BCP Communion

### **Sunday 25th - Sunday before Advent**

9.15 a.m. Much Birch Morning Worship



## **Diary Dates**

### **October 2018**

26th Village Market MBCH  
31st Gardening Club LBVH 7.30pm

### **November 2018**

1st Coffee Morning LBVH  
1st & 8th Artspace LBVH  
7th LB Parish Council Meeting  
8th MB Parish Council Meeting  
9th Service at Wormlow War Memorial  
10th "Keep Calm and Carry on" MBCH  
13th Whist Drive LBVH  
15th Hereford Civic Society Meeting  
15th Artspace LBVH  
17th Book Exchange Methodist Chapel  
17th Flicks in the Sticks MBCH  
20th WI Meeting MBCH  
23rd Village Market MBCH  
24th MB School Christmas Fayre  
28th Gardening Club LBVH

### **December 2018**

6th Coffee Morning LBVH  
7th Christmas Bingo LBVH

## **To Commemorate the End of the First World War.**



On Friday 9th November 2018 at 10.30am we will, once again, be gathering at the Liquid Amber Tree on the Rosemary Rigby Millennium Green, Wormlow's Official War Memorial, for a short service conducted by the Rev Mark Johnson, and for the laying of Wreaths and Crosses. This year we are placing a beautiful granite surround remembering the tremendous sacrifice made by so many in the 1914-1918 War.

We have been greatly helped by a special Person giving a wonderful and strictly anonymous donation, so very many grateful thanks!

We look forward to again welcoming children from Much Birch Primary School and all Parishioners who would care to join us.

**Keith James—Rosemary Rigby MBE**

## LITTLE BIRCH VILLAGE HALL



### **YOUR OPINION MATTERS!**

The Village Hall Trustees have been looking at ways of improving the facilities at the Hall

### **INTERESTED?**

TO FIND OUT MORE PLEASE COME ALONG TO AN OPEN SESSION ON 14th. NOVEMBER 7.00 – 8.00 pm AT THE HALL

### **THIS IS YOUR COMMUNITY HALL**

IT IS IMPORTANT THAT WE GET YOUR FEEDBACK

LBVH COMMITTEE – OCT 2018



- ◆ **CONSERVATORIES**
- ◆ **WINDOWS**
- ◆ **DOORS**
- ◆ **FASCIAS**
- ◆ **SOFFITS**
- ◆ **GUTTERS**

◆ **ALSO MISTED UNITS RE-**

**01981 541121**  
**07818 611010**  
**www.glazydays.net**  
**Email: sales@glazydays.net**

### **Meeting of the Hereford Civic Society**

Thursday 15th November  
7.30pm Kindle Centre beside Hereford ASDA, HR2 7JE

### **Housing, the endless conundrum: Markets versus need, the local scene**

Speaker: local estate agent Steven Thomas  
(Watkins Thomas)

Membership £15pa., visitor £3 donation  
[Contact David—01981 541058](mailto:David@01981541058)

## **KILPECKVILLAGE HALL**

**CRAFTS@KILPECK**, Saturday 10<sup>th</sup> November, 10.30 – 2pm. Tables available: [bethkvh@sky.com](mailto:bethkvh@sky.com) - well crafted, unusual gifts, plants, cards, raffle and tea/coffee and cake – how can you resist?

**CURRY & FAMILY QUIZ NIGHT**, Saturday 24<sup>th</sup> November, 7pm for 7.30 start. Tickets £7.50 pp – come along for a fun evening with a tasty curry and exercise for the brain! Cash prize for winning team.



Little Birch &  
Aconbury  
NEIGHBOURHOOD PLAN

### **Little Birch & Aconbury Joint Neighbourhood Development Plan**

### **Draft Plan**

The finalised draft plan, along with all the relevant documents were recently submitted to Herefordshire Council. Our clerk, Sophie Glover, has had confirmation that we are now in **Regulation 16**, which has a 6 week consultation period – 4 October to 15 November. Notices, should by now, have been posted within both parishes.

We trust that, following the conclusion of this period, it will then pass to an independent examiner.

Once the **Aconbury and Little Birch Neighbourhood Development Plan 2011 -2031** has been approved it will be recommended to go to **referendum**. If more than 50% of those qualifying within the area covered by the NDP vote in favour, it will be adopted by Herefordshire Council. This means that the LB&A NDP will form part of the **Local Development Framework** and be used to determine planning applications for both Aconbury and Little Birch.

For updates and notifications of future meetings please check out the website – [www.littlebirchparishcouncil.org](http://www.littlebirchparishcouncil.org).



**JOIN US  
FOR  
FESTIVE  
FUN**

**MUCH BIRCH  
SCHOOL PTFA**

## **Christmas Fayre**

Saturday 24<sup>th</sup> November  
11am – 1pm

Stalls, Tea Room, Raffle, Games,  
Cakes, Kids Craft Workshops,  
Santa's Grotto

## Light up a Life



St Michael's Hospice  
Always a place of light and love

*Christmas is often a time when we remember loved ones who are no longer with us and reflect on our memories from the time we spent together.*

*Light up a Life gives you the chance to remember your loved ones – family, friends and colleagues – by lighting a candle, writing a dedication for inclusion in the Hospice 'Books of Remembrance' and joining us at one of our special events.*

*For 2018, St Michael's Hospice is arranging 17 events at venues throughout Herefordshire and the surrounding area.*

*If you would like to Light up a Life this Christmas, please call 01432 851 000 or visit [st-michaels-hospice.org.uk](http://st-michaels-hospice.org.uk)*

### **Light up a Life Events**

**\* Thursday 29th November – 5.30pm**

*St Michael's Hospice, Bartestree (please note this is an outdoor event)*

## **Aconbury Shepherd Huts**



**Our huts are hand built to the highest of standards. Our standard hut includes insulation, double glazing, electrics and decoration.**

**Uses include craft room, play house, sleep over's etc.**

**Come and see our display hut or request our new brochure**

**We also build stables, field shelters, garden sheds, play houses, garden features and bespoke gates. Please ring for our dedicated brochure**

**Stephen Turner. The Underhills,  
Hollybush Lane, Much Birch,  
Herefordshire. HR2 8HX.**

**Telephone: Office 01981 540090  
Mobile 07768 206296**

**[www.aconburyshepherdhuts.co.uk](http://www.aconburyshepherdhuts.co.uk)  
[turnersofcrossways@btinternet.com](mailto:turnersofcrossways@btinternet.com)**

Come and join us at Much Birch Toddler group every Friday 9.30am -11.30am. We are a friendly and welcoming parent/carer run group. It is an ideal place for children to play and learn and for parents and grandparents to meet other families. We offer a wide range of fun, educational activities for babies and children aged from 0 months to 5 years. We like to get messy with paints and crafts; we also have an outdoor play area for fine weather play. Drinks and snacks are provided for the children. Tea or coffee for the adults. We are located in Much Birch village hall.

For further details please contact Lucy on; [lcook.8910@ntinternet.com](mailto:lcook.8910@ntinternet.com) or Karen on; 07817716137.

## **Much Birch**

### **Parent, Baby and Toddler Group**

**Come and Play!**

Chat and fun  
for all

Snacks

Drink lots of  
Tea or Coffee!

Make new  
friends

Friendly and  
Relaxed

Craft y  
Activities

Outdoor and  
indoor toys  
and play

*Much Birch  
Village Hall  
Every Friday  
9.30am – 12.30pm  
Birth to 4 years*



For more information please contact:  
Karen 07817716137 or Lucy [lcook8910@gmail.com](mailto:lcook8910@gmail.com)

## **Parish Walk**

**Sunday 4 November at 9am**

Meeting at Little Birch Village Hall and walking through Aconbury Woods to Twyford Common and back to the village hall for refreshments.

All welcome!

Angela Middleton  
Voluntary Footpath Officer  
01981 540377



**King's Thorn and Little Birch Gardening Club**  
**Annual Horticultural Show Report**

The Annual Horticultural Show was held on Saturday 1<sup>st</sup> September in Little Birch Village Hall. After three bouts of snow in the Winter and a very hot Summer, it was anybody's guess as to how many entries we were going to have and the kind of exhibits we were going to receive. We were not disappointed – the number of overall entrants increasing from last year with 44 entrants proudly exhibiting 292 entries between them. The weather had certainly not put off - or spoilt - the many fantastic entries we were to enjoy throughout the day.

The Vegetable & Fruit Classes drew out the best in the entrants with vast variety of produce proudly displayed. Derek Scrivens once again led the way with his produce, walking away with the Horticultural Shield, the David Enoch Cup ( best exhibit in Show); and the Llewellyn Sutton Cup for the person with the most points overall. This year we were proud to introduce the Selby Lloyd Shield (in memory of local gardener Selby Lloyd) for the person with the most points overall in Section 1 – Vegetables, and this was won by ..... yes you've guessed it – Derek Scrivens! The Harold Salisbury Shield for the winner of V1 was won by Des Wathen.

The wonderful display of flowers in Section 3 & 4 (Flowers & Floral Art) was a sight to behold with the Floral Art Shield won by Janet Gwinnett and the Rose Bowl being won by Keith Hardie.

The Domestic Section entries increased significantly with a wide variety of Jams/Marmalades/ Pastries of different kinds/ Scones and Fruit Cakes. Overall winner of this Section was Katie Rushgrove, who also walked away with an anonymous donation of a £25 voucher for the most points in the Class.

The Photographic Award, donated by the London Camera Exchange in Hereford and voted for by the public, was awarded to Barry Chapman, with the Painting Class award being given to Wendy Innes.

The Handicraft Section, with its new "Bag" category, produced some excellent entries, and in memory of the KT&LB Gardening Club treasurer there was the new Wilson Cup, which went to Val Ballantyne. Next year there will be a chance to produce a Hat (any medium) & a Christmas Tree decoration (any medium).

The Children's Section produce excellent entries, especially after the Workshop on the Friday afternoon, with pride of place going to Poppy Scrivens - the Children's Shield and the Over 8 Cup; the Ann Thomas Trophy (Best Entry) went to Henry Hall, and the Under 8 Cup to

Joshua Scrivens. Other notable entries included Harry Grobb; Oscar Roberts; Ronan Gould; Jemima Webb; Ella Gould. Next year the Children's workshop will be on **FRIDAY 6<sup>th</sup> SEPTEMBER 2019** at 4.00pm – put it in your diary!

At the end of the day the excellent raffle prizes donated by the Axe & Cleaver, The Pilgrim Hotel, Carrot and Wine Stores and Pengethley Garden Centre were issued, and the Sale of Produce (rather than an Auction) brought the day to a close.

Once again, a truly memorable event with the best displays one could only imagine. Some people went home with 1<sup>st</sup>, 2<sup>nd</sup>, and 3<sup>rd</sup> prize certificates, and a few Highly Commended certificates too. Even those who didn't win have the honour of knowing that they contributed to a good Show.

Well done everyone and see you on **Saturday 7<sup>th</sup> September 2019 !**

Lesley Chapman  
Show Secretary

## ARTSPACE



Are you a budding artist or would be artist? Maybe you've dabbled in the past and want to get back into it? Or perhaps you want to get started but can't seem to get round to it?

ARTSPACE could be just what you need! Whatever your ability level, you will be most welcome!

ARTSPACE is an opportunity for like minded people to come along to share a place and time to do their art.... whether it be sketching, painting or other paper based art work. You will need to bring your own materials and have your own project in mind.

It will be held at **Little Birch Village Hall on Thursday afternoons 3-5pm from 1st November – 15<sup>th</sup> November**

Cost will be £3 per person. Refreshments will be provided.

If you are interested please ring Maz Jooma on 541 048

### A CALL FOR HELP.....

We are looking for volunteers to go on a monthly rota to help us keep Much Birch Churchyard tidy.

We do have someone to mow the grass regularly but we need volunteers to generally tidy up e.g. sweep the path, get rid of weeds and accumulated rubbish in the corners and remove dead flowers from graves. We would be so grateful for this help and you do not have to be members of the congregation. Please contact the Churchwarden, Sylvia Jones tel. 01981 540980 if you can help.

## BRENDAN MORRIS

### CONSTRUCTION & CARPENTRY

### SPECIALISING IN uPVC

### WINDOWS, DOORS &

### CONSERVATORIES

call now for a free quotation  
on; 07855760912

email

[brendanmorris05@gmail.com](mailto:brendanmorris05@gmail.com)

## **MUCH BIRCH PARISH COUNCIL**

### **Some Information about Fireworks and Bonfires**

#### **Hosting a fireworks party**

If you have a safe place to do so and want to celebrate with fireworks in the comfort of your own garden or on other private land (with the landowner's permission), there's nothing to stop you and there's no reason why you can't enjoy a great evening. But remember that both you and your guests will need to take care.

These tips are to help you think about and prepare for a fun and safe celebration at home.

Plan ahead:

Fireworks must be stored safely, in a closed box, somewhere cool and dry, out of reach of children and animals, until the time they are needed. Don't keep the box under the stairs or in a passageway.

Do you have a large enough space to let fireworks off safely? Each firework should have a minimum safety distance marked on it.

Be considerate to your neighbours: warn them beforehand so they can take in their washing, close windows, keep their pets indoors and, if necessary, take other precautions. Why not invite them?

Only buy fireworks from reputable dealers. The fireworks should have the product safety marking BS7114 or equivalent and carry a CE mark.

Most shops have only been given permission to sell fireworks on or between these dates:

15 October to 10 November, 26 to 31 December plus 3 days before Diwali and Chinese New Year

To buy fireworks at other times, you must go to specially licensed shops. Fireworks cannot be let off between 11pm and 7am except on:

Bonfire Night (5 November), when the cut off is midnight; New Year's Eve, Diwali and Chinese New Year, when the cut off is 1am.

#### **Party time:**

Fireworks must only be handled and lit by responsible adults. Alcohol and fire don't mix – nor do alcohol and fireworks. Keep fireworks in a closed box well away from the bonfire or any other sources of heat or fire.

Follow the instructions on each firework. Different fireworks can present different hazards and so the instructions vary. Use a torch if you read the instructions in the dark – do not use a naked flame.

Let fireworks off one at a time.

Do not throw fireworks – it is highly dangerous.

Light them at arm's length, using a taper.

Never play with fireworks – they are explosives and can hurt you.

When you are watching fireworks, stand well back.

Never go near a firework that has been lit. Even if it hasn't gone off, it could still explode.

Hold sparklers one at a time in gloved hands at arm's length. When the sparkler goes out, it is still very hot so put it end down in a bucket of water.

Never leave matches or lighters lying around

We recommend that you **do not use** sky lanterns as you have no control over them once they've been set off. They can kill animals, litter the countryside and start fires. If you do choose to set them off, always follow the manufacturers' guidance/instructions carefully.

#### **Clearing up:**

Pick up the spent firework cases – they can still be dangerous. Look for fireworks with a torch. Use tongs or some other suitable tool and wear heatproof gloves.

Don't allow children to collect firework cases.

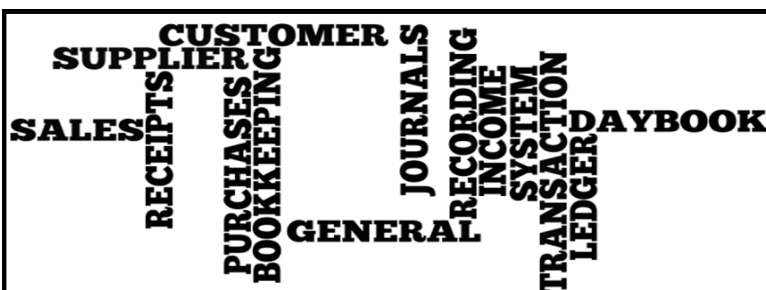
If any firework looks as if it hasn't gone off after at least half an hour, soak it in water to prevent it reigniting.

#### **Having a bonfire**

A bonfire is a great way to celebrate Bonfire Night, but do follow these safety tips:

You can't get rid of household waste on the bonfire if it will cause pollution or harm people's health. You should always burn dry material as it produces less smoke. Never burn treated wood, rubber, plastic, foam or paint.

Warn your neighbours beforehand so they can take in any washing, close windows, keep pets indoors and take other necessary precautions.



#### **EJ PARTINGTON BOOKKEEPING**

Bookkeeping & Accounting Specialist

Woodfield, Hollybush Lane, Much Birch, HR2 8HX

**07989 854593 / 01981 541109**

[emmadeer@hotmail.co.uk](mailto:emmadeer@hotmail.co.uk)

<b>Bookkeeping</b>	<b>VAT Returns</b>
<b>Invoicing</b>	<b>Management Accounts</b>
<b>Payroll</b>	<b>Self-Assessment Returns</b>

Emma Partington has over 10 years experience in the finance industry both in practice and in industry, a local business that is able to help with all your bookkeeping needs.

**Call or e-mail today for a no obligation discussion about your requirements.**

SPEAKING AT STEINER ACADEMY HERFORD-  
TUESDAY NOVEMBER 20TH 2018

"We need individuals like Dr. Elworthy to start the work of preventing war...  
This has been my personal dream for many years." — His Holiness the Dalai Lama

## THE BUSINESS PLAN FOR PEACE

Building a World Without War

BIRCH HALL  
AT 6.30PM

FREE ENTRY  
DONATIONS TO  
PEACE DIRECT

DR SCILLA ELWORTHY



## THE AXE & CLEAVER

Much Birch, Hereford, Herefordshire. HR2 8HU

Tel No: 01981 540203

Proprietors Andy & Sue Hoare

## WEEKLY SPECIALS

MONDAY –FRIDAY LUNCHTIME SPECIAL

TWO COURSES

£9.95

~~~~~

WEDNESDAY

SENIOR CITIZENS' LUNCH

TWO COURSES

£6.95

~~~~~

SUNDAY LUNCH

TWO COURSES

CHOICE OF THREE ROASTS

+

CHOICE OF DESSERTS

£12.95

BOOKING ADVISABLE

arts  
alive

FLICKS  
IN THE  
STICKS

at Much Birch  
Community Hall

Saturday 17th November, 6.00pm -

THE GREATEST SHOWMAN - SING-A-LONG! PG



*Ladies and gents, this is the  
moment you've waited for...*

The world is singing along with  
the most entertaining movie of  
2017 and now you can too with  
this special sing-a-long screen-

ing of *The Greatest Showman*. It's **your time to shine** –  
have fun, sing loud and 'Come Alive' – It's Showtime!

Thursday 22nd November, 7.30pm -

PHANTOM THREAD 15

Set in 1950's London, Reynolds Woodcock is a renowned  
dressmaker whose fastidious life is disrupted by a young,  
strong-willed woman, Alma, who becomes his muse and  
lover.

*Starring Vicky Krieps, Daniel Day-Lewis, Lesley Manville*

Tuesday 4th December, 7.30 pm -

MAMA MIA! HERE WE GO AGAIN PG

*Refreshments including hot dogs available from 7pm  
(5.30pm for 17/11).*

**Tickets £4.50 (£3.50 under 16s, Family of 4 £14.00)**

Tickets available in advance or on the door - for further info or to  
book tickets [muchbirchflicks@hotmail.com](mailto:muchbirchflicks@hotmail.com) or 01981 540097

For further information about films and screenings visit  
[www.artsalive.co.uk](http://www.artsalive.co.uk) (online booking available!)



## Murphy's Paw

The home of happy woofers!

Doggie Daycare

One to One Grooming

Home Boarding

Tump Lane, Much Birch

Tel: Tricia 07732 286069

[murphypaw2005@gmail.com](mailto:murphypaw2005@gmail.com)

[www.murphypaw.co.uk](http://www.murphypaw.co.uk)

*Providing a true "home from home" environment.*

*We welcome friends, old and new!*



FB: Murphy's Paw

Doggie Services



**BAYLEY'S  
WINDOW CLEANING  
SERVICE**

WATER FED POLE AND TRADITIONAL

WE ALSO CLEAN:-

- ⇒ **GUTTERS AND FACIAS**
- ⇒ **CONSERVATORY ROOFS**

***FREE QUOTATIONS***

\* REFERENCES CAN BE GIVEN \*

\* ESTABLISHED IN AREA \*

PHONE ANDREW

HOME: 01432 508979

MOBILE: 07771 870891

Email: bayleyscleaning@gmail.com



[www.greenleafarchitecture.co.uk](http://www.greenleafarchitecture.co.uk)  
E. [info@greenleafarchitecture.co.uk](mailto:info@greenleafarchitecture.co.uk)  
Tel. 01981 257180 M. 07946457251

Friendly and reliable, chartered Architectural Practice based in Wormelow.

All Architectural work undertaken. General advice; Planning applications; Detailed design for Building control and Tender; Project management



**Date for your diary**

**January 12th Little Birch Village Hall**

**Wassail with**

**The Compost Heap and Friends**

**More info in next month's newsletter.**

**AN INVITATION TO JOIN KILPECK ART CLUB**

Our new season began on 17 September 2018 and continues most Mondays until December. We meet on Mondays from 2pm–4pm, in Kilpeck Village Hall. There is no formal tuition but we all encourage each other and have an enjoyable afternoon. To cover the cost of hall hire there is a small membership charge. We are always pleased to see new members, including those who want to try painting for the first time. The first session you come to is free. Contact Jenny Davies e-mail [jen64davies@gmail.com](mailto:jen64davies@gmail.com), or Margaret Bircher at [tandmbircher@btinternet.com](mailto:tandmbircher@btinternet.com). We look forward to seeing you soon.

**Self-storage  
Herefordshire**

£15 per week—no VAT

20ft x 8ft

7 Days a week access  
Long or short term rental.

***Seasoned  
Firewood for Sale***

**George Cole**

**Mob: 07800952317**

**Tel: 01981241274**

**Much Birch WI**

Much Birch WI meets on the third Tuesday of each month in Much Birch Community Hall, just off the A49. The Hall is next door to the surgery and both are signed from the road.

Please contact Sallie on 01432 340069  
for further details.

**theWI**  
INSPIRING WOMEN

# Great Local Food & Drink in Much Birch

All Day Every Day



Menus on website [www.pilgrimhotel.co.uk](http://www.pilgrimhotel.co.uk)



## October Newsletter

Welcome to our first Autumn newsletter of 2018. We have put together some fabulous offers to tempt you, our previous guests back to the stunning Wye Valley in Herefordshire in the near future.

There are "Laid Back Sundays" from only £89 including a Cream Tea [**Special Offers Page**], great Spring walking packages, a stunning Murder Mystery offer, a smashing 2 night Bed & Breakfast deal at £27.25 pp and the best deal of all, our 3 Night Country Breaks at only £99pp. Fabulous value for money and proving very popular.

Even though Pat has retired, Deepak and his team are still producing great food, Trevor is thriving in the Bar & Restaurant, Jodie is running front of House magnificently and Jan is diligently looking after the bedrooms for you

No excuse why you shouldn't come back and say hello soon.

Best wishes

Steve & your Team

**The Pilgrim Hotel**

**Much Birch HR2 8HU**

**Booking is recommended - 01981 540742**

**Email [stay@pilgrimhotel.co.uk](mailto:stay@pilgrimhotel.co.uk)**

## POLISHED NAIL & BEAUTY LOUNGE

*"Where friends and beauty meet...."*

A GIRL SHOULD BE TWO THINGS

*Classy & Fabulous*

\*Coco Chanel



OPI MANICURES \* PEDICURES \* GEL POLISH \* SCULPTURED ACRYLIC/  
GEL NAIL EXTENSIONS \* BEACH/HOLLYWOOD TOES \* SIGNATURE  
EYEBROWS—SCULPT, COLOUR AND CORRECT \* THREADING \*  
\*WAXING \* SEMI PERMANENT EYELASHES

REGULAR AESTHETIC CLINICS WITH Dr Sarah Parkes

GENTLEMANS LOUNGE HELD EVERY TUESDAY AFTERNOON FROM 2-5PM

'The Wood Shed'

Pengethley Garden Centre, Peterstow, Ross on Wye, HR9 6LL

Email [Polished.jacqueline@gmail.com](mailto:Polished.jacqueline@gmail.com)



Polished-Nail And Beauty

01989 730791 or 0775913783

OPEN: TUESDAY-SATURDAY 9am-5pm. Complimentary Tea and Coffee



# TEA ON THE TRAIL

AT ST MARY'S CHURCH, LITTLE BIRCH

## Refreshments for walkers

Enjoy a break for a cup of tea or coffee



**Donations** to cover costs and for much needed renovation work at St Mary's Church.

**Thank you**

### MUCH BIRCH SURGERY

#### Abdominal Aortic Aneurysm Screening for Men aged 65+

A simple scan can tell you if you have an Abdominal Aortic Aneurysm. This is an enlargement of the main body vessel in the abdomen and if left untreated it can be fatal. Please call **01905 733 830** to book into a local screening.

Much Birch Surgery is looking for a **Handyperson!**

For general maintenance and odd jobs at the Surgery.

For more information please contact Louise Parckar, Practice Manager, on 01981 540310

Many thanks.

### Little Birch Gardening Club News



We are being entertained on

**WEDNESDAY 31st OCTOBER** by our

own 'new' chairperson, Janet Gwinnett, on her 'First Year of Retirement for a Gardener'. (Now there's a thought - do we ever really retire!) What a year to choose - this one should be interesting on how she overcame (or not) the challenges - looking forward to this.

Trying something different, in June the club hosted an evening of 'Nature in Music and Verse'. We were musically entertained by Cantando, a group of eight enthusiastic guitar players. Their repertoire is classically based with a few modern pieces. This was interspersed with poems and readings theme linked to a celebration of



## About Us

Carrot&Wine Stores is brand new to the Hereford area.

Our family run company aims to offer all the convenience and family friendly service of a local store with the added benefit of locally sourced produce.

We stock local groceries, meats and cheese to local award winning cider, wine and all the daily essentials such as bread, milk, eggs and newspapers.

Open 7 days from 7am to 9pm

**Find us at Wormelow on the A466!**

(Postcode for Sat Nav: HR2 8EJ)

**CARROT&WINE  
STORES**  
—  
**WORMELOW**

gardening and nature. It was a super evening, enjoyed by all who attended and, of course, a hearty ploughmans supper went down very well.

If you require any information about the guitar group, or indeed would like to join them, then give Lesley Chapman (musical director) a call or see her at any of our meetings.

We are a very friendly group and would love to see some new faces who would be made most welcome. Come along to any of our meetings held in the Village Hall at Little Birch, usually the last Wednesday of every month starting at 7.30 pm, refreshment available and a good chat!

Looking forward to seeing you.

Jenny Baldwin - on behalf of LBGC Committee

### Much Birch Village Markets

The dates for 2017 are as follows: October 26<sup>th</sup>, November 23<sup>rd</sup>, December 14<sup>th</sup>.

Horse/pony/animal help available -

Very helpful, young, teenage, girls are looking to help on a local yard in exchange for a ride (or help with other animals for some pocket money)



Many thanks to all those who so generously sponsored Cathy Sadler and son John on their annual HHCT Ride and Stride cycle ride on September 8th. Once all the donations have been collected, we hope to have made close to £600 – half of which will go towards Little Birch's St Mary's church repairs and half to Hereford Historic Churches' Trust to renovate other county churches.

This year, our 10-hour, 45-mile ride to 14 churches between Much Birch and Woolhope went smoothly. We were spurred on by mercifully cool weather, Cathy's newly-serviced bike and John's dry sense of humour! Thanks to Kate Dillon's suggestion, we also avoided the long, uphill, home-run from Hoarwithy by returning via Laskett Lane.

## The log sales are back!



Worcestershire Wildlife Trust's log sales start for the autumn/winter on 29th & 30th September at **Tiddesley Wood**, near Pershore. The sales take place from the barn, which is about 300m from the main car park entrance.

Did you know that all of the wood sold at Tiddesley Wood is from our nature reserves and that the removal of some trees creates open habitat for a variety of wildlife? Not only that, all profits from the sales come back to the Trust to help fund future work - it's a win-win situation.

You can come along either day from 10am through to 1.00pm and pick up bags at £5.50 each or get loose logs packed into your boot or trailer - a price will be worked out for you at the time based on £110 per cubic metre.

[www.bgbuk.com](http://www.bgbuk.com)

[info@bgbuk.com](mailto:info@bgbuk.com)



## Your one-stop design and planning solution

With over 10 years Industry experience

- Planning Drawings & Applications
- Architectural Drawing & Design
- Homes, extensions & listed buildings
- Repair & Conservation of Historic Buildings
- Historic & Timber Building Survey & Consultancy

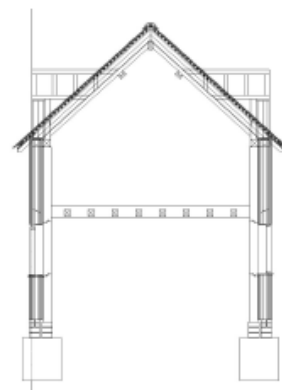
**We specialise in Planning drawings/applications & 3D architectural design.**



Design & Consultancy

[www.bgbuk.com](http://www.bgbuk.com) [info@bgbuk.com](mailto:info@bgbuk.com)

**Tel: 01432 607 407**





## HOLLYBUSH HIRE

*Vintage Tea Set Hire*

*Woodfield, Hollybush Lane, Much Birch, HR2 8HX*

*07989 854593 / 01981 541109*

*[emmadeer@hotmail.co.uk](mailto:emmadeer@hotmail.co.uk)*

*Tea Cups, Saucers & Tea Plates*

*Sandwich / Cake Plates*

*Teapots, Sugar Bowls & Milk Jugs*

*Cake Stands*

*Lanterns, Mirrors*

## GARTH BRADBURY FENCING LTD

**All types of fencing**

**Gates**

**Field Shelters**

**Timber Outbuildings**

**[www.gb fencing contractors.com](http://www.gb fencing contractors.com)**

**[garthbradburyfencing@hotmail.com](mailto:garthbradburyfencing@hotmail.com)**

**01981 541385 : 07970 346460**

## W.M. PARTINGTON

### GENERAL BUILDER

- MINI-DIGGER & EXCAVATOR HIRE

RENOVATIONS  
BARN  
CONVERSIONS  
NEW BUILD  
EXTENSIONS

ROOFING  
CONCRETING  
PLASTERING  
GROUNDWORK

UPVC WINDOWS  
AND DOORS  
BRICKWORK  
STONEMASONRY

**RING FOR A QUOTATION**

**MUCH BIRCH  
07774 805369 / 01981 541109**



**THE CASTLE INN @ LITTLE BIRCH**

## OPENING TIMES



**Mon & Tues: closed**

**Wed: 6pm - 11pm**

**Thurs: 6pm -11pm**

**Fri: 6- 11pm**

**Sat: 12pm- 3pm. 6pm-12pm**

**Sun: 12pm- 6pm**

**Seb and Emma welcome you to the Castle Inn for home cooked food, real ale and friendly atmosphere!**

**New pub number; 01981540943**

***Call for any information and bookings!***

Letter to the Editor.....



*"The Castle Inn"*

*We are very lucky to have our own public house and restaurant.*

*We had a friend visiting from Manchester. He was so impressed with the atmosphere, decor, friendliness and good beer. Then, on what was a pizza night, we were offered a varied menu of other food and were served with a delicious meal.*

*Please let us all support Seb and Emma in this enterprise. Maybe there are not enough of us to keep the Castle open as a pub, but we could spread the word about the food and get outsiders to come over, too.*

*Maureen Beauchamp, (Glenview, Kings Thorn Common)*

**Please send copy for the December Newsletter to [editorial@birchesnews.org.uk](mailto:editorial@birchesnews.org.uk) or written contributions to Liz Hall at Walmere, Wrigglebrook, Kingsthorpe HR2 8AW.**

**—by 18th November please.**



The Ross Library Development Group invites you to attend the Talk on Tuesday evening 20th November 7.00 for 7.30 p.m. at Ross Library when lecturer and journalist MARSHA O'MAHONEY will tell us about her project RIVER VOICES: STORIES FROM THE WYE. All are welcome. RLDG Members £4 entry, non-members £5.00 Students free. All funds raised go towards improving the Library facilities; refreshments available for donations. For information see the website [www.rldg.org.uk](http://www.rldg.org.uk)

ROSS SCIENCE SOCIETY: The November lecture will be held on Wednesday evening 7th November 7.00 for 7.30 p.m. at the Castle Lodge Hotel, Wilton. The speaker will be Prof. Paul Hardaker on the topic THE SCIENCE OF THUNDERSTORMS. All are welcome. Entry £4 for visitors or £16 annual subscription. Students free. Parking is available opposite the hotel entrance. For further information ring the Secretary on 01989 720539 or see the website [www.rosssciencesociety.org.uk](http://www.rosssciencesociety.org.uk)

ROSS CIVIC SOCIETY: The AGM will be on Wednesday evening 14th November 7.00 for 7.30 p.m. at the Larruperz Centre, Ross, to be followed by an illustrated Talk from Margot Miller on DUBRICIUS, THE HEREFORDSHIRE 6TH CENTURY SAINT. All are welcome. No entry fee as this is the AGM. For further details contact the Secretary on 01989 562424. Refreshments available.

ROSS ARTS APPRECIATION SOCIETY: The Talk on Friday 2nd November 7.00 for 7.30 p.m. at the Larruperz Centre, Ross (Watkins Room) will be with the speaker Bill Laws, author and journalist, telling us about HEREFORDSHIRE LORE and HISTORY IN OUR AGE. All are welcome. Entry: visitors £4.50, Members £2.50 (Subscriptions £10.00 p.a.); refreshments provided. For details contact the Chair on 01989 720539

### LocalCarer

**Over15 years of experience**

For all aspects of care within the comforts of your own home

Call Kim for advice

07944 745853



Improve flexibility, build strength and develop control and endurance

# PILATES

with Alison Allan

**Little Dewchurch Village Hall**  
(3 miles from the A49,  
between Hereford and Ross)

**Mondays (am) and Wednesdays (pm)**

**Telephone: 01432 840491**

**Email: [alionpilates2016@gmail.com](mailto:alionpilates2016@gmail.com)**



STOTT PILATES

merithew CORPORATION

## Jargon-free Computer Help



## Computer Tuition, Technical Support and Buying Advice.

Local, friendly help with  
no jargon and  
reasonable rates

**Ben Roberts**

**07702 760789**

**[ben.roberts@outlook.com](mailto:ben.roberts@outlook.com)**

# healthyfeet

mobile clinic

## Mobile Foot Clinic

Experienced, Fully Qualified and Registered  
Foot Health Practitioners, First Aid Trained  
and DBS Police Checked

- Nail Trimming
- Thickened Nails
- Corns
- Callus (hard skin)
- Cracked Heels
- Verrucas
- Fungal Nails & Infections
- Ingrown Toenails
- Diabetic Foot Care

Checked  
Disclosure &  
Barring Service



**Sophie Limming Dip FH MCFHP MAFHP**  
Qualified & Registered Foot Health Practitioner

**Tel: 0749 309 2960**

sophie@healthyfeetclinic.co.uk www.healthyfeetclinic.co.uk

## AQUASSIST

### LIQUID WASTE SOLUTIONS

## Septic Tanks & Treatment Plants

- emptying
- jetting
- blocked drains
- servicing
- installations
- emergencies

Locally based company  
01432 353 888  
book@aquassist.co.uk  
www.aquassist.co.uk



## décor solutions

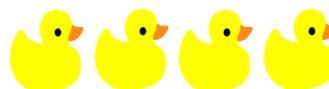
**Tim Jones**  
Painter and Decorator



**Kings Thorn, Herefordshire, HR2 8AW**  
**Tel: 01981 540242 Mob: 07810 895355**  
[tjsj@me.com](mailto:tjsj@me.com)

Three generations of experience specialising in Painting and Decorating services.  
General property maintenance duties carried out.  
Fully insured. Good competitive rates.  
A high standard of workmanship and customer satisfaction guaranteed.

## WYE BATHROOMS



Local family run company. Design & installation of  
Bathrooms & shower rooms



We are also registered with NIC-EIC for all your Electrical  
work

Call Paul for a free quotation

Or visit

[www.wyebathrooms.co.uk](http://www.wyebathrooms.co.uk)

07894-563897



APPROVED CONTRACTOR

## EMMA BRADBURY EQUINE

Mobile horse clipping services  
Horse sitting / Holiday Cover  
Or just an extra pair of hands!

**25 years experience with horses**

**Fantastic references available**

01981 541385 : 07725 536648

01981 541385 : 07970 346460

18 year old babysitter available weekdays/  
weekends. £6 an hour. Ring 07909 940916 for more  
details.

Cecily Daffern

## Little Birch Parish Council

Your Little Birch Parish Council Councillors are:-

Cllr Ben Roberts	Chairman	01981 540100	b3nroberts@gmail.com
Cllr Steve Naylor		01981 541323	steve.naylor5@btinternet.com
Cllr Mike Morley		01981 541027	morley04@globalnet.co.uk
Cllr Annette Wissler		Contact through the clerk	
Cllr Janet Gwinnett		01981 540651	janetgwinnett@hotmail.com
Angela Middleton	Volunteer Foot Paths Officer	01981 540377	ajbmiddleton@hotmail.co.uk
Sophie Glover	PC Clerk	01432 270499	littlebirchpcclerk@hotmail.co.uk

Parish Council meetings usually happen at 7.30pm on the first Wednesday of the month and all parishoners are very welcome to attend. Agendas are posted on the Parish notice board at least three days in advance and are also on our web site.

Thank you.

Mrs Sophie Glover, Little Birch Parish Clerk, The Orchard, Ridgehill, Hereford HR2 8AG

Website: [www.littlebirchparishcouncil.org](http://www.littlebirchparishcouncil.org)

### Little Birch Parish Facebook Group



Find the latest news, events and business listings all in one place.

You are welcome to promote your local business, advertise a local event or post news or information of interest to the village and surrounding area.

Search for *Little Birch Parish Group* on Facebook

### Yoga



In Much Dewchurch and Steiner Academy  
Mondays 6.00—7.15

- ⇒ Tension and stiffness?
- ⇒ Back ache, backache, general aches and pains?
- ⇒ Difficulty sleeping?

Learn how to relax and let go. Discover how you can move more freely and improve your posture. A practical approach to yoga that is adaptable to anyone regardless of age or physical condition. All welcome

- ◆ Small group Classes
- ◆ Individual attention
- ◆ Connect with your breath
- ◆ Link simple movements for health and well-being
- ◆ Suitable for those recovering from injuries

Individual lessons also available

For more info contact Mike 01981 250341

### Little Birch Drama Group Present

The next Little Birch Panto !

### “HARLEQUIN AND COLUMBINE”



At Little Birch Village Hall

Friday 25th January 2019

7.30pm

Saturday 26th January 2019

2.30pm and 7.30pm

Panto is written and directed by Frank Ryding and stars all our local talented actors of all ages.

### R&R FIREWOOD

*Well seasoned hardwood  
Cut to any size  
Delivered to your door*

**STEPHEN or TARA**

**Tel: 01432 870282**





12th October 2018

**PARISH MEETING** - at the Parish Council Meeting held on the 4<sup>th</sup> October 2018 at the Much Birch Community Hall. The new crossing had been installed on the A49 from the top of Tump Lane and this would be operational in the near future. Parents and Much Birch School Governors were in attendance at the meeting to discuss ongoing concerns about parking in the environs of the school and about the new yellow lines pushing parking further up the road. The parents and Governor would go back to the school to look at plans to help alleviate the issues being experienced. The possibility of parking land and other ideas would be explored. The Parish Council would be willing to assist with plans in so far as they were empowered to do so.

The future Much Birch Parish Council Meeting dates for 2018 are as follows: November 8<sup>th</sup> and December 6<sup>th</sup>. The next meeting of the Parish Council will be held on **Thursday 8<sup>th</sup> November from 7.30pm** - at The Much Birch Community Hall.

Please see notice boards and website for agendas. As always the public and press are more than welcome to attend and will have the opportunity to speak directly to their representatives.

A reminder that:-

**Your Much Birch Parish Councillors are:-**

**Cllr Alison Cook** (Chair) Jasmine Cottage, Wrigglebrook Lane, Kingsthorpe, Hereford, HR2 8AW, e mail [thecooks@wyenet.co.uk](mailto:thecooks@wyenet.co.uk) Tel. 01981 540703  
**Cllr Steve Turner** (Vice Chair) The Underhills, Hollybush Lane, Much Birch, Hereford, HR2 8HX, e mail [turnersofcrossways@btinternet.com](mailto:turnersofcrossways@btinternet.com) and Tel. 01981 540090

**Cllr Andrew Crum** Anfield House, Barrack Hill, Kingsthorpe, Hereford, HR2 8AX, e mail [a.crum@btinternet.com](mailto:a.crum@btinternet.com)  
Tel. 01981 540002

**Cllr Roisin Burge** The Old Hall, Barrack Hill, Little Birch, Herefordshire, HR2 8AX [roisinburge@hotmail.com](mailto:roisinburge@hotmail.com) Tel. 01981 540724

**Cllr David Baldwin** The Granary, Much Birch, Herefordshire, HR2 8HS [baldwin79@btinternet.com](mailto:baldwin79@btinternet.com) Tel. 01981 541198

**Cllr Rosemary Rigby MBE** Cartref, Tump Lane, Wormelow, Herefordshire, HR2 8HN Tel. 01981 540477

Full minutes of the meetings and information etc. can be found on the Parish Council website following the link found in this summary. [www.muchbirchparish.org.uk](http://www.muchbirchparish.org.uk).

You can also find us on Twitter at <https://twitter.com/MuchBirchPC> and Facebook at <https://www.facebook.com/groups/Much.Birch.Parish>

---

## South Hereford Rural Safer Neighbourhood Team (SNT)

**Lowri Anderson PCSO 40247**

**Hereford City Southside and Rural SNT**

**West Mercia Police**

### Get in touch

**101** to talk to your local SNT or report a crime  
[herefordsouthside.snt@westmercia.pnn.police.uk](mailto:herefordsouthside.snt@westmercia.pnn.police.uk)  
[www.westmercia.police.uk](http://www.westmercia.police.uk)

**Herefordshire Cops / @southsidecops**

Only call 999 in an emergency, when a crime is in progress or life is in danger.

**For daily updates on incidents in your area register for our Dotmailer service via [www.westmercia.police.uk](http://www.westmercia.police.uk).**

### Make the difference

For more information about becoming a Special Constable, please visit,

**Warwickshire Police:** [www.warwickshire.police.uk/specialconstables](http://www.warwickshire.police.uk/specialconstables)

**West Mercia Police:** [www.westmercia.police.uk/specialconstables](http://www.westmercia.police.uk/specialconstables)



Where we work; South Wye SNT is based at South Wye Police Station, Goodrich Grove, Newton Farm, Hereford, HR2 7DB, we work around the areas of Rural: Aconbury; Allensmore; Ballingham; Bolstone; Callow; Dewsall; Dinedor; Garway; Grafton; Harewood; Haywood; Hentland; Holme Lacy; Kenderchurch; Kentchurch; Kilpeck; Kingstone; Little Birch; Much Birch; Little Dewchurch; Llandinabo; Llanwarne; Lower Bullingham; Much Dewchurch; Orcop; Pencoyd; Pontrilas; SDevereaux; St Weonards; Tretire with Michealchurch; Thruxton; Treville; Wormbridge; Wormelow.

### Your team

Sgt Emma Freer, PC Roger Bradley, PC Jim Phillips, PCSO Lowri Anderson, PCSO Adam Westlake, PCSO Christina Howard, PCSO Christopher Yarwood.

**About your team....** Safer Neighbourhood Teams work with local people and partners to identify, tackle and solve issues that matter to the community where you live.

Making neighbourhoods safer by cutting day to day crime and anti-social behaviour is at the heart of keeping people in West Mercia safe.

