



Newsletter for King's Thorn, The Birches & Aconbury

A newsletter for the villages of King's Thorn, Little Birch, Much Birch & Aconbury.

November 2017. First published 1977.. Happy 40!

Remembrance 2017

The Wormelow War Memorial gathering is on Friday 10th November at 10.30 a.m. at the Rosemary Rigby Millennium Green, when we hope to have a splendid group of pupils from Much Birch C of E Primary School with us and taking part in the service of Remembrance.

It would be so lovely to have many wreaths and crosses laid at the liquid amber tree in special honour of the great sacrifice made for us all.

Please note we would be delighted to have many parishioners and friends joining us too! We will be looking forward to welcoming you all.

Keith James and Rosemary Rigby
(01981 540477)

Please send copy for the December Newsletter to editorial@birchesnews.org.uk or written contributions to John Bryant at Bramley Bungalow, Aconbury Close, King's Thorn.

—by 18th November please.

Church Services

November 2017



5th November: Little Birch Communion 11.00 a.m.
Much Birch All Souls Service 6.30 p.m.

12th November: Much Birch Remembrance
and communion 9.15 a.m.
Little Birch Remembrance
Service 10.50 a.m.

19th November: Much Birch Communion 9.15 a.m.
Little Birch Communion
(traditional language) 11.00 a.m.

26th November: Much Birch Morning Worship 9.15 a.m.

The Monastery of Poor Clares at 11am every Sunday.
Holy Communion at Much Birch every Thursday at 9.30am.

Diary Dates

November 2017

- 2nd Coffee Morning LBVH
- 2nd Much Birch Parish Council MBCH 7.30pm
- 11th Book Exchange Methodist Chapel
- 11th Food Fair Hereford Leisure Centre
- 14th Whist Drive LBVH
- 21st WI MBCH
- 22nd LB Parish Council Meeting LBVH 7pm
- 29th Gardening Club LBVH

December 2017

- 6th Gardening Club Social LBVH
- 7th Much Birch Parish Council MBCH 7.30pm
- 8th Christmas Bingo LBVH 8pm
- 12th Whist Drive LBVH
- 14th Flicks in the Sticks MBCH 7.30pm
- 18th Flicks in the Sticks MBCH 2.30pm
- 19th WI Meeting MBCH

January 2018

- 13th Wassail! LBVH

Little Birch and King's Thorn Gardening Club.

On Wed. Nov. 29th our speaker will be Mr. Bill Laws on the 'Curious History of Vegetables'

All meetings are held at 7.30pm in Little Birch Village Hall.
John Bryant 01981 540316.

CHRISTMAS BINGO

With Robyn Hodges

Little Birch Village Hall
8th December at 8pm

Come along and try your
luck!

B I N G O				
4	26	43	59	70
9	30	41	55	68
7	23	FREE 32 SPACE	50	63
8	20	31	60	75
13	18	34	52	69



Local News for November 17.

A very warm welcome is given to Ed and Sue Agnew who have moved into 'Downlands' on the Thorn and to Owain and Geraldine Prosser, with children Jack and Ellie and two dogs, Scamp and Tom. We trust that both families will soon settle into their new homes and will be happy in the community.

We were sad to hear of the departure of Gill Crum as senior nurse at the Much Birch Surgery. She has given some 20 years of loyal service and we wish her well for her future.

We are most sad to hear of the death of Mrs Helen Marshall of Much Birch who was for many years one of our District Nurses with Joan Ingram and Mary Newman. A full tribute will be given in the next newsletter.

Much Birch Community Hall Project

The intention of the Management Committee is to extend and refurbish the Community Hall to provide a building of greater size with improved facilities. Since the opening of the hall in 1979 it has been in constant use, is financially sound, and is successful in its operation, but there is now a demonstrable need for a new extension and refurbishment which will provide for an enlarged lobby area and the provision of two additional meeting/activity rooms as well as the refurbishment of facilities.

The extension will be energy efficient, light and welcoming, with a commitment to sustainability. The design of the build will ensure that it will be easy to maintain, will have minimal heating costs and consequently will be more environmentally friendly. The project is split into stages, and the pace of completion of those stages will be dependent upon fundraising. Stage 1 has already been finished by building the extension up to damp course level which also includes the drainage system. We are about to embark on Stage 2, which comprises of the construction of all exterior and interior brickwork, all roofing structures, tiling, and installation of roof lights, doors and window frames, thus making the new structure watertight. Further work will be done according to funds becoming available i.e. completing the interior finishes, refurbishing cloakrooms and providing separate toilet facilities for disabled people and eventually to extend and refurbish the kitchen.

The identified reasons for these works are;

- An improved entrance lobby which would provide easier access to the building, with not only immediate cover from the weather for attendees but would also assist with heat retention. The present lobby area is small, with awkward access for wheelchairs and pushchairs, and requires people to queue in the open before gaining entry to the building.
- the cloakrooms need a general upgrade and there is an urgent need for separate facilities for disabled people, as not all wheelchairs can access
- the provision of two additional activity/meeting rooms to allow multi use of the building at any one time.

It is important to say that the hall will remain open and in use during the works.

Once the extension and refurbishment is complete, it is intended to widen the scope of the hall's use by encouraging other activities such as fitness groups for all ages, a social meeting place for older people and to provide a meeting place for those living alone. In the last Parish Plan some time ago, people stated that they would like to see the introduction of adult education classes, activities for young people, keep fit activities, aerobics, yoga, and clubs for children and senior citizens.

There is an identified need therefore to expand the use of this central rural community facility and for it to become more of a venue to provide opportunities for people of all age groups to participate in activities and social events. With the extra space the Management Committee would aim to introduce as many of the above activities as possible.

The project is intended to enhance the community facility for the present day and for future use. The committee would welcome any donations, offers to help with fundraising or to give support in any way.

John H.C. Jones, Chairman Tel: 01981 540980

CARROT & WINE STORES

WORMELOW

Open Now

We have all your daily essentials

Pop in and see for yourself what an amazing selection of products we have

<p>Fresh Bread, Milk, Refillable Wine, Groceries, Home Made cakes,</p>	<p>.....</p>	<p>Local Meats, Home Made Meals, Deli Counter & Much, Much More!</p>
--	--------------	--

Find us on the A466!





THE CASTLE INN @ LITTLE BIRCH

OPENING TIMES



Mon & Tues: closed

Wed: 6pm - 11pm

Thurs: 6pm - 11pm

Fri: 6- 11pm

Sat: 12pm- 3pm. 6pm-12pm

Sun: 12pm- 6pm

Seb and Emma welcome you to the Castle Inn for home cooked food, real ale and friendly atmosphere!

Christmas bookings now being taken!

Open 11am till 1pm on Christmas Day for celebratory Christmas drinks

New pub number; 01981540943

Call for any information and bookings!

Much Birch Community Hall 100 Club

The September draw took place on 15th October 2017 in Much Birch Community Hall at 10.30am and the results were as follows:

1st prize - 84

2nd prize - 94

Mr. K. Davies

Mr. & Mrs. C.V.Thomas

Much Birch

Much Birch

The next draw will take place on 12th November 2017 in Much Birch Community Hall.

GARTH BRADBURY FENCING LTD

All types of fencing

Gates

Field Shelters

Timber Outbuildings

www.gb fencing contractors.com

garthbradburyfencing@hotmail.com

01981 541385 : 07970 346460



You are invited to a

Demonstration of Flower Arrangements For Christmas



by
Sandra Snell
of The Flower House
Ross-on-Wye

Friday 8th December 2017

Much Birch Community Hall

Prompt Start 7.30pm

Tickets £5.00 to include light refreshments from

Tel: 01981 540980 or 01981 540677

Proceeds in aid of Much Birch Church Windows Fund



Hereford
Local Group

present

GLUTEN FREE & FREE FROM FOOD FAIR

on

SATURDAY 11TH NOVEMBER 2017

at

HEREFORD LEISURE CENTRE

Holmer Road, Hereford, HR4 9UD

Parking - £1 for 4 hours

11:00am - 2:00pm

INCLUDING: COOKERY DEMONSTRATIONS + FISH & CHIPS

★ Black Liquorice ★ Christine's Puddings ★
Gingerella's ★ Grandad Fats ★ Green's Beers ★
Green Sisters ★ Henni's Sweet Treats ★
Ladybird Foods ★ Voakes ★ & many more...

Entry by Donation



Murphy's Paw

The home of happy woofers!

Doggie Daycare

One to One Grooming

Home Boarding



FB: Murphy's Paw
Doggie Services

Tump Lane, Much Birch
Tel: Tricia 07732 286069
murphypaw2005@gmail.com
www.murphypaw.co.uk

Providing a true "home from home" environment.

We welcome friends, old and new!



HOLLYBUSH HIRE

Vintage Tea Set Hire

Woodfield, Hollybush Lane, Much Birch, HR2 8HX
07989 854593 / 01981 541109
emmadeer@hotmail.co.uk

Tea Cups, Saucers & Tea Plates

Sandwich / Cake Plates

Teapots, Sugar Bowls & Milk Jugs

Cake Stands

Lanterns, Mirrors

BRENDAN MORRIS CONSTRUCTION & CARPENTRY SPECIALISING IN uPVC WINDOWS, DOORS & CONSERVATORIES

call now for a free quotation

on; 07855760912

email

brendanmorris05@gmail.com

St Michael's Hospice Neighbours

St Michael's Hospice Neighbours are a group of volunteers who offer support and companionship to people and their families living with a terminal illness.

How can you help?

Becoming a Hospice Neighbour means you can make a difference to a patient or their carers quality of life by helping with little things, like providing company, collecting prescriptions, taking their dog for a walk or a bit of light shopping.

Open Gardens (sponsored by Radbournes)

Opening your garden for St Michael's Hospice can be a very rewarding and valuable experience for you, your visitors and the patients and families that need our services.

If you have a garden that you feel is worth visiting, please contact St Michael's Hospice Community Fundraising Team.

To find out more, please call us on **01432 851 000** or email events@smhospicehereford.org
www.st-michaels-hospice.org.uk

Much Birch WI

Much Birch WI meets on the third Tuesday of each month in Much Birch Community Hall, just off the A49. The Hall is next door to the surgery and both are signed from the road.

Visitors and potential new members are always welcome.

Please contact Sallie on 01432 340069 for further details.

BAYLEY'S WINDOW CLEANING SERVICE

WATER FED POLE AND TRADITIONAL

WE ALSO CLEAN:-

- ⇒ GUTTERS AND FACIAS
- ⇒ CONSERVATORY ROOFS

FREE QUOTATIONS

* REFERENCES CAN BE GIVEN *

* ESTABLISHED IN AREA *

PHONE ANDREW

HOME: 01432 508979*

MOBILE: 07771 870891

EMail: bayleys@fsmail.net

ROSS LIBRARY DEVELOPMENT GROUP: All are welcome to attend the Talk on Tuesday evening 21st November when Lindy Wildsmith will advise on how to prepare: WINTER SALADS, DRESSINGS AND OTHER PLEASING THINGS. The Meeting will be held in the Dennis Potter Room at Ross Library, doors open 7.00 p.m. with the Talk beginning at 7.30 to approx. 9.00 p.m. Refreshments are available for a donation. Entry £5.00 for non-Members, £4.00 for Members, Students free. All funds raised go towards improving the Library facilities. For further details see the website www.rldg.org.uk or ring 01989 562424 or 720539

ROSS SCIENCE SOCIETY: The next illustrated Talk will be held on Wednesday evening 1st November when we will hear about the VENUS HYPOTHESIS from Dr Annabel Cartwright. This postulates that complex life evolved on Venus and then travelled to Earth. All interested are welcome at the Castle Lodge Hotel, off the Wilton roundabout, Ross, (extra parking is available opposite the entrance) to arrive at 7.00 p.m. with the Lecture beginning at 7.30. Entry £4.00 p.p. or £16 for an annual subscription. Students free. Enquiries to the Hon. Secretary on 01989 720539 or see the website www.rosssciencessociety.org.uk

ROSS CIVIC SOCIETY: The next Talk will be held on Wednesday evening, 8th November, 7.00 for 7.30 p.m. at the Larruperz Centre, Ross, with the A.G.M. taking place beforehand. The Talk will be given by Margot Miller who will describe MEDIEVAL LIFE AT GOODRICH CASTLE. There will be no entry charge for this Meeting and all interested are welcome. The annual subscription is £15.00 for an individual and £25.00 for joint membership. For further details ring 01989 562424.

ROSS ARTS APPRECIATION SOCIETY: All interested are welcome to attend the Talk by Ben Casson who will tell us about his Father, Mike Casson, the potter and the **Wobage Craft Gallery** at Upton Bishop. The Talk will be held in the Watkins Room at the Larruperz Centre at 7.30 p.m. on Friday 3rd November. Entry £2.50 for Members, £5.00 for non-members, annual subscription £10.00. For further details ring 01989 562424 or 720539.

Linedance classes in MBCH on Wednesday evenings. 7.30pm-9.30pm...£4.00 Not suitable for absolute beginners Contact Jean Harris on 07506718907 for further details





**FLICKS
IN THE
STICKS**

**at Much Birch
Community Hall**

Tuesday 14th November, 7.30pm - THE CARER 15
 The Carer, made by Hungarian director Janos Edelenyi, is notable as a showcase for Brian Cox, who plays Sir Michael Gifford, a retired Shakespearean actor suffering from a form of Parkinson's that has left him flailing and cantankerous at his country estate. He has alienated a host of caregivers, but his daughter forces a new companion on him, a Hungarian refugee who has acting aspirations of her own. It's not hard to predict that a friendship will develop between the newcomer and the curmudgeon, a bond that threatens some of Sir Michael's existing relationships but ultimately proves beneficial for all parties.
Starring Brian Cox, Anna Chancellor, Emilia Fox

**Saturday 18th November, 2.30pm -
 BEAUTY AND THE BEAST PG**
 Disney's animated classic takes on a new form, with a widened mythology and an all-star cast. *Starring Emma Watson, Dan Stevens, Luke Evans and Ewan McGregor*

COMING in December ...
 Tuesday 12th December - LOVE IS THICKER THAN WATER 15
Refreshments including hot dogs available from 7pm (2pm for Matinee).
Tickets £4.50 (£3.50 under 16s)

Tickets available in advance or on the door - for further info or to book tickets please email
bryonyconnolly@hotmail.com or call 01981 540097
For further information about films and screenings visit
www.artsalive.co.uk (online booking available!)

Local Home Grown Christmas Trees.
Norway Spruce and Nordman Fir.
Assorted sizes. Freshly cut





Follow signs in Little Dewchurch from 1st December.
Or phone 01432 840826 to come and select a growing tree for cutting closer to Christmas.



Welsh Water have warned of extensive works to take place in Hereford this Autumn which will result in traffic disruption and delays.

For further information visit Welsh Water online dwrcymru.com/media-centre or contact Sheena.Howells@dwrcymru.com

October Update

Greetings from the Wye Valley.

Where on earth has 2017 gone, it's flown by for us in a blur of happy guests and great reviews, for which the hard working staff are both grateful & very deserving. The Hotel & the Valley Restaurant have each received "Certificates of Excellence" based on your feedback and we are thrilled to be so well regarded locally & Nationally. The friendly, professional team has remained virtually unchanged for the last 3 years, giving a level of stability, experience and service that we are extremely proud of.

We hope to welcome you back and have put together a series of offers (some especially for returning guests) to tempt you back very soon.

Best wishes
Steve, Pat, Deepak & the Team

ps We still have a few rooms left for both the Christmas and New Year packages.
Give reception a call for more information.

Murder Mystery Nights 2017/18

Tickets sales are well ahead of last year and we advise early booking to make sure you don't miss these great value weekends. Those of you who have enjoyed them before will know how much fun they are.
Dinner & Death in the Wye Valley has never been such good value!

All pre-Xmas events are pretty much sold out and the January evenings are starting to sell well, so get in early to join in the fun.

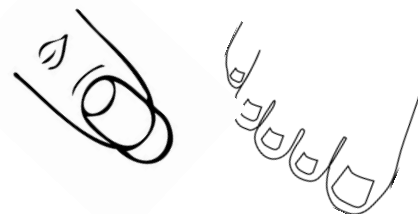
Don't forget that these Murder Mystery Dinners make an excellent Christmas present for friends or family.
It's a perfect evening for a family get together, a group of friends or work colleagues so come along and join in with our professional actors

Call to check availability now on 01981 540742



Pilgrim Hotel - Much Birch

NAILS AT THE LOFT



Manicures, Pedicures, Cracked Heel Treatments

Sculptured Acrylic Nail Extensions, OPI Gel Colour Polish (Last 2-3 weeks)

Beach Toes, Hollywood Toes, Toenail Restoration

GIFT VOUCHERS / PRINCESS VOUCHERS (Age 5+) AVAILABLE

OPENING HOURS TUES - SAT 10am - 4pm (Evening appointments are available).

15% HAPPY HOUR - TUESDAYS & WEDNESDAYS 3-4PM

Senior Citizen Discounted Rates Available Every Tuesday

City & Guilds Qualified Nail Technician - OPI Salon Professional

Fully Insured - Beautiful Salon With A View!

Call Jacqueline on 07759131783 to make an appointment

(Situated at the end of The Pilgrim Hotel Car Park)



**Little Birch & Aconbury
Joint Neighbourhood Development Plan**

The Draft Plan is making progress after being approved by both Little Birch Parish Council and Aconbury Parish Meeting for Public Consultation.

When adopted, this Plan will be part of the statutory planning framework which will determine future development. Not only does the Neighbourhood Development Plan show the policies of how each parish will meet its required housing targets for the next 13 years, but also covers policies for Community Facilities, Communication & Broadband and Renewable Energy.

Our neighbourhood faces many challenges and opportunities like many rural communities in Herefordshire. This Plan is a 'Vision for the Future' of both Aconbury and Little Birch showing the planning policies for sustainable development.

As you can imagine this is probably the most important document for your neighbourhood in a generation.

All the policies evolved from the Questionnaire sent to you and the feedback received. Those questionnaires were delivered to all households in Little Birch and Aconbury by volunteers and when the Draft Plan is printed shortly we will need volunteers again, to distribute it to all concerned. If you are able to help please contact Sophie Glover, Clerk to LB&A NDP Steering Group - littlebirchpcclerk@hotmail.co.uk

The Steering Group's next meeting is on Thursday 30 November at Little Birch Village Hall at 7pm - and everyone is very welcome. Because this date is beyond the deadlines for both 'The Church Mag.' and 'Birches Newsletter' we will be in touch at the start of 2018.

For more information and to be kept up to date, or to have notification of future meetings about Little Birch and Aconbury Neighbourhood Development Plan check out the website - www.littlebirchparishcouncil.org.

Pilgrim Hotel Special Offers - Free Nights!

The 2 night DB&B prices are particularly good value as you will get a **FREE night B&B** as a thank you. As an extra "thank you" to returning customers, if you book before 5/11/17 you will receive a **complimentary bottle of house wine** to enjoy with your dinner on one evening.

Our best offers are on our website and we are constantly updating them. You can even try a cheeky auction bid if you are looking for a last minute room. Book your next Pilgrim getaway now, you won't get better for the price!

Prices start at just £29.50 pp per night for B&B

Our fabulous Autumn Dinner Menus are receiving rave reviews from guests and other diners, using largely local produce & lovingly made fresh to order.

Call to check availability now on 01981 540742

MUCH BIRCH COMMUNITY HALL

PRESENTS

ANOTHER AUDIENCE

WITH

KEITH NICHOLS

Saturday 11th November - 7.30pm



Keith Nichols is one of the foremost and respected authorities on Classic Jazz & Ragtime music & a remarkable jazz pianist who performs at all the major jazz festivals & lectures at The Royal Academy. He also enjoys playing the piano to accompany silent films so he will be entertaining us all royally, explaining how different accompaniments were provided for early silent movies as well as performing songs and piano solos from the Ragtime & Vaudeville era.

An evening not to be missed!

Doors open 7.00pm

• Entrance £9.50 to include a Ploughman's Supper •

• Licensed Bar •

Tickets available on the night or, to book in advance

phone Carole 01981 540095 or Bryony 01981 540097

Proceeds to Much Birch Hall Community Hall Development Fund



**DO YOU HAVE A FEW HOURS
TO HELP SOMEONE IN
HEREFORDSHIRE?**

You can help in so many ways, for example:

- > visiting someone at home
- > helping with shopping or food preparation
- > escorting people home from hospital and to appointments
- > responding to wheelchair requests or delivering and collecting wheelchairs
- > supporting local people following a flood or fire.

Interested?

Contact your local British Red Cross on

0300 333 6521 or **volunteerHSW@redcross.org.uk**
redcross.org.uk/volunteering

The British Red Cross Society, incorporated by Royal Charter 1008, is a charity registered in England and Wales (220142). Contact (2007)08 and see of Mar (0750). Photo © David Rowland

Refusing to ignore people in crisis



The Hereford Times have recently announced that a new speed and weight limit will be imposed in Tump Lane this Autumn.

For further information see Hereford Times online or contact keithjamesphotos@btinternet.com

The Singing Tree is an informal fun singing group that started its life in Much Dewchurch, moved with us to Garway and we are now meeting in Kingsthorne since our move here in July last year. No auditions, no need to read music, just come along and enjoy yourself. We meet on Wednesdays at 7.30 pm at Wynds Poynt. For more information please contact Hilary on 01981 540022 the turning@phonecoop.coop



Yoga

In Much Dewchurch and Steiner Academy
Mondays 6.00—7.15



- ⇒ Tension and stiffness?
- ⇒ Back ache, backache, general aches and pains?
- ⇒ Difficulty sleeping?

Learn how to relax and let go. Discover how you can move more freely and improve your posture. A practical approach to yoga that is adaptable to anyone regardless of age or physical condition. All welcome

- ◆ Small group Classes
- ◆ Individual attention
- ◆ Connect with your breath
- ◆ Link simple movements for health and well-being
- ◆ Suitable for those recovering from injuries

Individual lessons also available

For more info contact Mike 01981 250341

Aconbury Shepherd Huts



Our huts are hand built to the highest of standards. Our standard hut includes insulation, double glazing, electrics and decoration.

Uses include craft room, play house, sleep over's etc.

Come and see our display hut or request our new brochure

We also build stables, field shelters, garden sheds, play houses, garden features and bespoke gates. Please ring for our dedicated brochure

Stephen Turner. The Underhills, Hollybush Lane, Much Birch, Herefordshire. HR2 8HX.

**Telephone: Office 01981 540090
Mobile 07768 206296**

**www.aconburyshepherdhuts.co.uk
turnersofcrossways@btinternet.com**



DEAN & SUN
Solar Electric Installation

Offering a full range of electrical services and now specialising in the installation and maintenance of PV solar panels to generate electric for households and small businesses.

Please contact us for a free, no obligation site survey and quotation or to discuss your requirements in more detail. We aren't salesmen, we aren't working for anyone else, we aren't a regional office...

We are a Hereford based family run business who will offer the perfect balance of service, value and affordability to new and existing customers.

Please see our website for full details and updates on the changes to the Feed In Tariff or email us at info@deanandsun.co.uk to receive our quarterly newsletter.

Tel: 01981 540030
Mobile: 07818 847986
Email: info@deanandsun.co.uk
www.deanandsun.co.uk

FOR FUTURE GENERATIONS

REACT



Self-storage Herefordshire

£15 per week—no VAT
20ft x 8ft

7 Days a week access
Long or short term rental.

Seasoned Firewood for Sale

George Cole

Mob: 07800952317

Tel: 01981241274

Email: coleg600@gmail.com

CUSTOMER
SUPPLIER
SALES
RECEIPTS
PURCHASES
BOOKKEEPING
GENERAL
JOURNALS
RECORDING
INCOME
SYSTEM
TRANSACTION
LEDGER
DAYBOOK

EJ PARTINGTON BOOKKEEPING

Bookkeeping & Accounting Specialist

Woodfield, Hollybush Lane, Much Birch, HR2 8HX

07989 854593 / 01981 541109

emmadeer@hotmail.co.uk

Bookkeeping	VAT Returns
Invoicing	Management Accounts
Payroll	Self-Assessment Returns

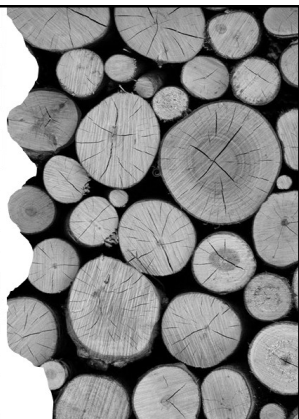
Emma Partington has over 10 years experience in the finance industry both in practice and in industry, a local business that is able to help with all your bookkeeping needs.

Call or e-mail today for a no obligation discussion about your requirements.

**R&R
 FIREWOOD**

*Well seasoned hardwood
 Cut to any size
 Delivered to your door*

STEPHEN or TARA
 Tel: 01432 870282



**W.M.
 PARTINGTON**

GENERAL BUILDER

- MINI-DIGGER & EXCAVATOR HIRE

RENOVATIONS	ROOFING	UPVC WINDOWS
BARN	CONCRETING	AND DOORS
CONVERSIONS	PLASTERING	BRICKWORK
NEW BUILD	GROUNDWORK	STONEMASONRY
EXTENSIONS		

RING FOR A QUOTATION

MUCH BIRCH
 07774 805369 / 01981 541109



THE CASTLE INN @ LITTLE BIRCH

OPENING TIMES



Mon & Tues: closed

Wed: 6pm - 11pm

Thurs: 6pm -11pm

Fri: 6- 11pm

Sat: 12pm- 3pm. 6pm-12pm

Sun: 12pm- 6pm

Seb and Emma welcome you to the Castle Inn for home cooked food, real ale and friendly atmosphere!

Christmas bookings now being taken!

Open 11am till 1pm on Christmas Day for celebratory Christmas drinks

New pub number; 01981540943

Call for any information and bookings!

BM KAYE TAXI

**Local Taxi available
 no job too large or too small !!**

Contact Brian Kaye on

**01981 540734 OR 07968 147415
 DAYS ONLY**

décor solutions

Tim Jones
 Painter and Decorator



Kings Thom, Herefordshire, HR2 8AW
 Tel: 01981 540242 Mob: 07810 895355
tjsj@me.com

Three generations of experience specialising in Painting and Decorating services.
 General property maintenance duties carried out.
 Fully insured. Good competitive rates.
 A high standard of workmanship and customer satisfaction guaranteed.

healthyfeet

Mobile Foot Clinic

Sophie is an experienced and qualified Foot Health Practitioner, a Registered Member of the British Association of Foot Health Professionals and is DBS Police Checked



- Nail Trimming
- Thickened Nails
- Corns
- Callus (hard skin)
- Cracked Heels
- Verrucas
- Fungal Nails & Infections
- Ingrown Toenails
- Diabetic Foot Care



Sophie Limming Dip FH MCFHP MAFHP
Qualified & Registered Foot Health Practitioner

Tel 0749 309 2960

sophie@healthyfeetclinic.co.uk www.healthyfeetclinic.co.uk

18 year old babysitter available weekdays/
weekends. £6 an hour. Ring 07909 940916 for more
details.

Cecily Daffern

Little Birch Parish Council

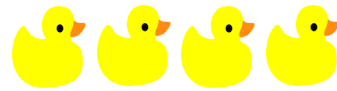
Your Little Birch Parish Council Councillors are:-

Clr Ben Roberts	Chairman	01981 540100	b3nroberts@gmail.com
Clr Elaine Godding	Vice Chair	01981 540607	ecgodding@hotmail.co.uk
Clr Steve Naylor		01981 541323	steve.naylor5@btinternet.com
Clr Mike Morley		01981 541027	morley04@globalnet.co.uk
Clr Annette Wissler		Contact through the clerk	
Angela Middleton	Volunteer Foot Paths Officer	01981 540377	ajbmiddleton@hotmail.co.uk
Sophie Glover	PC Clerk	01432 270499	littlebirchpcclerk@hotmail.co.uk

Parish Council meetings happen at 7.30pm on the first Wednesday November and December and all parishoners are very welcome to attend. Agendas are posted on the Parish notice board at least three days in advance and are also on our web site www.littlebirchparishcouncil.org

Every one is welcome to attend, and if you have a particular question that you would like to put to him, please can you let the clerk know before the meeting? Mrs Sophie Glover, Little Birch Parish Clerk, The Orchard, Ridgehill, Hereford HR2 8AG

WYE BATHROOMS



Local family run company. Design & installation of Bathrooms & shower rooms

We are also registered with NIC-EIC for all your Electrical work

Call Paul for a free quotation

Or visit

www.wyebathrooms.co.uk

01989-563558

07894-563897



ALLANGAS & OIL



- ♦ Oil Installation and Servicing
- ♦ Boiler Specialist
- ♦ Landlord Inspections
- ♦ Heating Installations
- ♦ All aspects of domestic gas
- ♦ LPG and plumbing
- ♦ Ex British Gas engineer
- ♦ Over 21 years experience

T: 01432 840491

M: 07761646635

Steven Allan

Oftec Reg No: C12495

Gas Safe Reg No: 188939



Much Birch Parish Council
Parish Clerk Mrs Alison Wright
Longfield House, Gooses Foot, Kingstone, Herefordshire HR2 9NE
Tel. 01981 250860
Email: muchbirchclerk@hotmail.co.uk

17th October 2017

PARISH MEETING – at the Parish Council Meeting held on the 5th October 2017 at the Much Birch Community Hall.

Those present heard about the outcomes of a review consultation on the parking adjacent to the Much Birch School. The Parish Council had discussed the parking with residents, at the September meeting, and communicated with the consultants. The recommendations made by the consultants would now go forward for consideration. There was also an update on the Neighbourhood Plan and the Questionnaires were out for completion.

Future Dates for Neighbourhood Plan Steering Group Meetings are: 26 October; 30 November.

The next meeting of the Parish Council will be held on **Thursday 2nd November 2017 from 7.30pm** - at The Much Birch Community Hall.

Please see notice boards and website for agendas. As always the public and press are more than welcome to attend and will have the opportunity to speak directly to their representatives.

A reminder that:-

Your Much Birch Parish Councillors are:-

Clr Alison Cook (Chair) Jasmine Cottage, Wrigglebrook Lane, Kingsthorpe, Hereford, HR2 8AW, e mail thecoops@wyenet.co.uk Tel. 01981 540703

Clr Steve Turner (Vice Chair) The Underhills, Hollybush Lane, Much Birch, Hereford, HR2 8HX, e mail turnersofcrossways@btinternet.com and Tel. 01981 540090

Clr Andrew Crum Anfield House, Barrack Hill, Kingsthorpe, Hereford, HR2 8AX, e mail a.crum@btinternet.com

Tel. 01981 540002

Clr Tim Jones Swiss Cottage, Wrigglebrook, Kingsthorpe, Hereford, HR2 8AW e mail tjsj@me.com Tel. 01981 540242

Clr Roisin Burge The Old Hall, Barrack Hill, Little Birch, Herefordshire, HR2 8AX roisinburge@hotmail.com Tel. 01981 540724

Clr David Baldwin The Granary, Much Birch, Herefordshire, HR2 8HS baldwin79@btinternet.com Tel. 01981 541198

Full minutes of the meetings and information etc. can be found on the Parish Council website following the link found in this summary. www.muchbirchparish.org.uk.

You can also find us on Twitter at <https://twitter.com/MuchBirchPC> and Facebook at <https://www.facebook.com/groups/Much.Birch.Parish>

Much Birch PC Meeting Dates for 2017

The 2017 dates for Much Birch Parish Council Meetings, all on Thursdays from 7.30 to 9.30pm in the Community Hall:

November 2nd and December 7th

South Hereford Rural Safer Neighbourhood Team (SNT)

Lowri Anderson PCSO 40247

Hereford City Southside and Rural SNT

West Mercia Police

Get in touch

101 to talk to your local SNT or report a crime
herefordsouthside.snt@westmercia.pnn.police.uk
www.westmercia.police.uk

Herefordshire Cops / @southsidecops

Only call 999 in an emergency, when a crime is in progress or life is in danger.

For daily updates on incidents in your area register for our Dotmailer service via www.westmercia.police.uk.

Make the difference

For more information about becoming a Special Constable, please visit,

Warwickshire Police: www.warwickshire.police.uk/specialconstables

West Mercia Police: www.westmercia.police.uk/specialconstables



Where we work; South Wye SNT is based at South Wye Police Station, Goodrich Grove, Newton Farm, Hereford, HR2 7DB, we work around the areas of Rural: Aconbury; Allensmore; Ballingham; Bolstone; Callow; Dewsall; Dinedor; Garway; Grafton; Harewood; Haywood; Hentland; Holme Lacy; Kenderchurch; Kentchurch; Kilpeck; Kingstone; Little Birch; Much Birch; Little Dewchurch; Llandinabo; Llanwarne; Lower Bullingham; Much Dewchurch; Orcop; Pencoyd; Pontrilas;

Your team

Sgt Emma Freer, PC Roger Bradley, PC Jim Phillips, PCSO Lowri Anderson, PCSO Adam Westlake, PCSO Christina Howard, PCSO Christopher Yarwood.

About your team.... Safer Neighbourhood Teams work with local people and partners to identify, tackle and solve issues that matter to the community where you live.

Making neighbourhoods safer by cutting day to day crime and anti-social behaviour is at the heart of keeping people in West Mercia safe.



Improve flexibility, build strength and develop control and endurance

PILATES

with Alison Allan

Little Dewchurch Village Hall
(3 miles from the A49,
between Hereford and Ross)

Mondays (am) and Wednesdays (pm)

Telephone: 01432 840491

Email: alisonpilates2016@gmail.com



STOTT PILATES

merriethew.com

Andy and Sue

Welcome you to

THE AXE AND CLEAVER Much Birch



Excellent food served in our spacious Restaurant

SENIOR CITIZENS' LUNCH
On Wednesdays—2 courses
For £6.95

SUNDAY ROAST LUNCH
£10.95 for 2 courses—Bookings advised

Lovely Beer Garden with field for Touring
Caravans and Tents

Tel: 01981 540203

No Stress, No Worries,

Glazy Days

- ◆ CONSERVATORIES
- ◆ WINDOWS
- ◆ DOORS
- ◆ FASCIAS
- ◆ SOFFITS
- ◆ GUTTERS

◆ ALSO MISTED UNITS REPLACED

01981 541121

07818 611010

www.glazydays.net

Email: sales@glazydays.net

EMMA BRADBURY EQUINE

Mobile horse clipping services
Horse sitting / Holiday Cover
Or just an extra pair of hands!

25 years experience with horses
Fantastic references available

01981 541385 : 07725 536648

01981 541385 : 07970 346460



Would you like to improve your computer skills? Do more online? Stay in touch with family and friends? Maybe you were given a computer or tablet as a gift but aren't sure how to use it? I can help.

- One to One support in your home using your own tablet or computer if you have one.
- All abilities catered for from complete beginners to those who want to improve existing skills.
- I can also provide technical support for your computer problems and advice on buying a new computer or tablet and advise on the best broadband connection for you.

I have extensive experience of working with individuals and groups and will help you to gain confidence and learn new skills in a relaxed, supportive and jargon free way.

Ben Roberts

01981 540100 - 07702 760789 - ben.roberts@outlook.com